

# TERTIARY INSTITUTIONS SERVICE CENTRE

Western Australia



July 2014 – June 2015

# Tertiary Institutions Service Centre

Western Australia

## THIRTY-SIXTH ANNUAL REPORT to 30 June 2015

**Tertiary Institutions Service Centre Inc**

*Address for all correspondence:*

**Level 1, 100 Royal Street  
EAST PERTH WA 6004**

*Office Location:*

**First Floor  
100 Royal Street  
EAST PERTH WA 6004**

*Telephone: (08) 9318 8000*

*Facsimile: (08) 9225 7050*

**[www.tisc.edu.au](http://www.tisc.edu.au)**

Thirty-sixth Annual Report  
Prepared and printed by TISC staff  
TISC Inc WA  
TISC is a registered trade mark  
September 2015

# ANNUAL REPORT

## FOREWORD

It is with much pleasure that I present the Thirty-Sixth Annual Report of the Tertiary Institutions Service Centre (TISC).

This report contains information about the various functions of the Centre and its operational structure, together with financial reports and statistical information on the 2014/2015 applications process. The TISC Management Committee considers this will enable readers to appreciate and understand the wide range of activities in which TISC is currently engaged. The detailed statistical tables relating to 2014 WA Year 12 results and 2015 applications, offer and enrolment information have not been published in hardcopy. This information is available at [www.tisc.edu.au](http://www.tisc.edu.au).

Overall application numbers decreased again for the 2015 admissions period, largely due to the 'half-year cohort' of Year 12 students in 2014, which came about because the state government had changed the starting age for school children in 2003. The consequent drop in Year 12 numbers in 2014 has made many of the usual statistical comparisons meaningless and trends difficult to identify. TISC received a total of 14,028 undergraduate university applications, representing an overall decrease of 24.7% on the 18,622 received the previous year, with numbers of WA Year 12 applicants decreasing by 31.6% and Other applicants decreasing by 12.6%. The number of offers made also decreased significantly, by 25.9% to 12,253 in 2015. In the 2014 STAT year, the number of STAT candidates decreased again, with 1,720 attending STAT compared to 1,995 in the previous year. The final number of WAUFP students enrolled in 2014 was 145 compared to 191 in the previous year. There were 9 students enrolled in the Fast Track program and 17 students sat the Mid-Year Entry examinations.

A range of publications and documents were produced by TISC for WA Year 12 students. The *2015 TISC Guide* was distributed free to current WA school leavers, together with a personalised letter instructing them how to apply through TISC and information about the release of their results. TISC also provided presentations at metropolitan and country schools on the ATAR, requirements for university entry, preference and offer systems. A Powerpoint presentation aimed at Year 12 students, parents and teachers was available on the website. The Universities Admission Advice Letter (UAAL), which includes scaled scores, ATARs (if applicable) and university eligibility information, was available online as a pdf to all WA students with at least one scaled score, including those not in Year 12. As in previous years, students could order and pay for hard copy(ies) of the UAAL on official TISC stationery, if desired. To inform students how their scaled scores are derived, a raw to scaled score report for each student was also made available online.

TISC undertook significant IT projects again this year. The Past WA Results Collection system and Course of Study Aggregation system were modified to provide further data to university users. The Experian Batch Pro address validation system was installed and proved very useful in improving address data accuracy and in reducing manual workload for address corrections. It was also interfaced with TISOnline to provide real-time address validation for applicants. Modifications to the TISC database and a number of related programs were further amended to fulfil the Universities' requirements regarding their special entry pathways and programs. Upgrades were made to Systems and Communications Servers from Microsoft Windows server 2003 to Windows server 2012, and two new UPS were commissioned to supply uninterruptible central power to IT workstations for up to an hour, to better equip IT staff in administering central applications and servers infrastructures in case of general power failures.

It is with much sadness I report that the TISC IT Manager, Foo Meng Kong, passed away in April 2015 after a brief illness. TISC received many messages of condolence from the University community who had nothing but praise for the way Foo Meng managed the Universities' IT requirements in his time at TISC.

On behalf of the TISC Management Committee, I would like to express my appreciation for the high levels of commitment, efficiency and diligence shown by the Centre's staff. Finally I also wish to thank members of the Management Committee and the various committees of TISC for their co-operation and support.



Ms Carolyn McInnis  
Chair TISC Management Committee  
(1 July 2014 to 30 June 2015)



## CONTENTS

	Page
<b>Foreword</b>	i
<b>The Tertiary Institutions Service Centre Inc</b>	
Objects of the Tertiary Institutions Service Centre Inc	1
Major Activities of the Centre	1
Member Institutions	1
<b>Committees</b>	
Management Committee	2
Applications Committee	2
Scaling Policy Committee	2
Joint SCSA/TISC Scaling Implementation Committee	2
Joint Working Group on Tertiary Admission	2
<b>Centre Administration</b>	
Staff Structure	3
Accommodation	4
Funding	4
<b>Initiatives and Developments</b>	
General Developments	5
IT Developments	5
IT Systems Upgrade	6
Customer Service	7
School Curriculum and Standards Authority Liaison	8
State Training Provider (TAFE) Liaison	8
Interstate Liaison	8
Australian Law Schools Entrance Test	8
National Data Collection of Applications and Offers	8
Australasian Conference of Tertiary Admissions Centres (ACTAC)	9
<b>Applications Statistics - 2015 Intake</b>	
Applications	10
Preferences	10
Offers	11
Change of Preferences	11
WA Year 12 Population	12
Applicants with Interstate Year 12	12
Other Applicants	13
Flow Pattern of Non-WA Year 12 Applications	14
Applications and Offers Statistics 1977-2015 (Graph)	15
<b>Website Statistics</b>	
2014/2015 Summary	21
Monthly Report	24
University Applications	25
WA Year 12 Results and ATARs	27
University Offers	28
WAUFP Results	29
UAAL Hardcopy Orders	29
TISCOOnline Static Content Search	29
Browser Compatibility	29
Mobile Devices Compatibility	29
Web Referrals	30
Email Subscription Service Updates	32

	<b>Page</b>
<b>Special Tertiary Admissions Test (STAT)</b>	
STAT Enrolments	28
STAT Scores	28
Testing Sessions in the Metropolitan Area	29
Scheduled Testing Sessions in Regional Areas	29
Scheduled Testing Sessions in Prisons	30
Special Use of STAT	30
STAT National Database	31
Changes That Occurred in 2014	31
<b>Western Australian Universities' Foundation Program (WAUFP)</b>	
Provider Colleges and Student Numbers	32
Student Subject Enrolments	32
Nationality Group	33
Setters, Checkers and Markers	34
Special Tertiary Admissions Test (STAT)	34
Final Examinations	34
Evaluation of the Examination Papers	35
Subject Moderation	35
Scaling	35
Notification of Results	36
Relationship between ELACS Results and the CPS	36
Certificates of Achievement and Letters of Congratulation	37
Future Changes	37
<b>The University of Western Australia Residential Colleges</b>	38
<b>School Visits</b>	39
<b>Schedule of Dates</b>	40
<b>TISC Publications</b>	41
<b>Schedule of Fees and Charges</b>	42
<b>List of Appendices</b>	44
A - Customer Service Statistics	45
B - Western Australian Universities' Foundation Program Statistics	49

**Note:** Detailed statistics on applications, offer and enrolments by course within a university for Undergraduate courses are on [www.tisc.edu.au](http://www.tisc.edu.au) (see Publications, Reports and Statistics).

## **TERTIARY INSTITUTIONS SERVICE CENTRE (INC)**

The organisation known as the Tertiary Institutions Service Centre (TISC) was established on 10 December 1975 by an agreement of the participating tertiary institutions. A new constitution was subsequently drawn up in June 1984 to establish the Tertiary Institutions Service Centre (Incorporated) (TISC Inc) under the Associations Incorporations Act 1895-1982. The constitution was revised in April 1995, and again in June 2001.

Under the terms of the TISC Constitution a Management Committee consisting of representatives from the participating universities was appointed to act on behalf of the universities and to be responsible for the activities of the Centre.

### **OBJECTS OF THE TERTIARY INSTITUTIONS SERVICE CENTRE INC**

The objects of the Centre are as follows:

- (i) to process applications for admission to the Institutions;
- (ii) to enhance and facilitate interest and participation in higher education in the state of Western Australia;
- (iii) to do all such acts, matters and things and carry out such other functions as the Committee deems desirable to further the objects of the Centre and the common interests of the Institutions.

### **MAJOR ACTIVITIES OF THE CENTRE**

- (i) Processing of all applications for admission to one of the participating member universities for an undergraduate program of study (including those with graduate entry) and other courses as agreed from time to time;
- (ii) Conduct of specially designed tests such as the Special Tertiary Admissions Test (STAT);
- (iii) Administration of the Western Australian Universities Foundation Program (WAUFP);
- (iv) Publication of information in relation to admission in Western Australian public universities.

### **MEMBER INSTITUTIONS**

Curtin University	(Curtin)
Edith Cowan University	(ECU)
Murdoch University	(Murdoch)
The University of Western Australia	(UWA)

## COMMITTEES

### MANAGEMENT COMMITTEE

The Management Committee is responsible for overseeing the operations of the Centre. This committee comprises two representatives from each member university. The Secretary to the committee is a representative from the Tertiary Institutions Service Centre.

The Constitution and Rules of the Centre provide for the Chair of this committee to be rotated between the member universities and that the Chairperson should not be appointed for more than two years.

**Meeting Dates: 10 October 2014, 5 December 2014, 13 March 2015 and 5 June 2015**

### APPLICATIONS COMMITTEE

The Applications Committee is a forum for university Admissions Officers and TISC staff to discuss issues concerning the applications process. This Committee reports to the Management Committee.

**Meeting Dates: 1 August 2014, 7 November 2014 and 6 March 2015**

### SCALING POLICY COMMITTEE

The Joint Curriculum Council/TISC Scaling Policy Committee reviews and determines scaling policy and procedures for WACE courses and TEE subjects. The committee reports to the Curriculum Council and TISC Management Committee.

**Meeting Dates: 10 March 2015**

### JOINT CURRICULUM COUNCIL/TISC SCALING IMPLEMENTATION COMMITTEE

The Joint Curriculum Council/TISC Scaling Implementation Committee, which is attended by TISC, Curriculum Council and university representatives, is held annually. At this session, the Scaling Report was presented along with proposed scaling points for small candidature language subjects. The Committee confirms the scaling outcomes which are circulated to the Curriculum Council and the TISC Management Committee.

**Meeting Date: 14 December 2014, 17 December 2014**

### JOINT WORKING GROUP ON TERTIARY ADMISSION

The Joint Working Group on Tertiary Admission is a forum for the universities and TISC to discuss common issues that relate to TISC and/or admission policy issues. This committee reports to the Management Committee. The position of Chair is rotated between the universities at each meeting.

**Meeting Dates: No meetings were held in this reporting period**

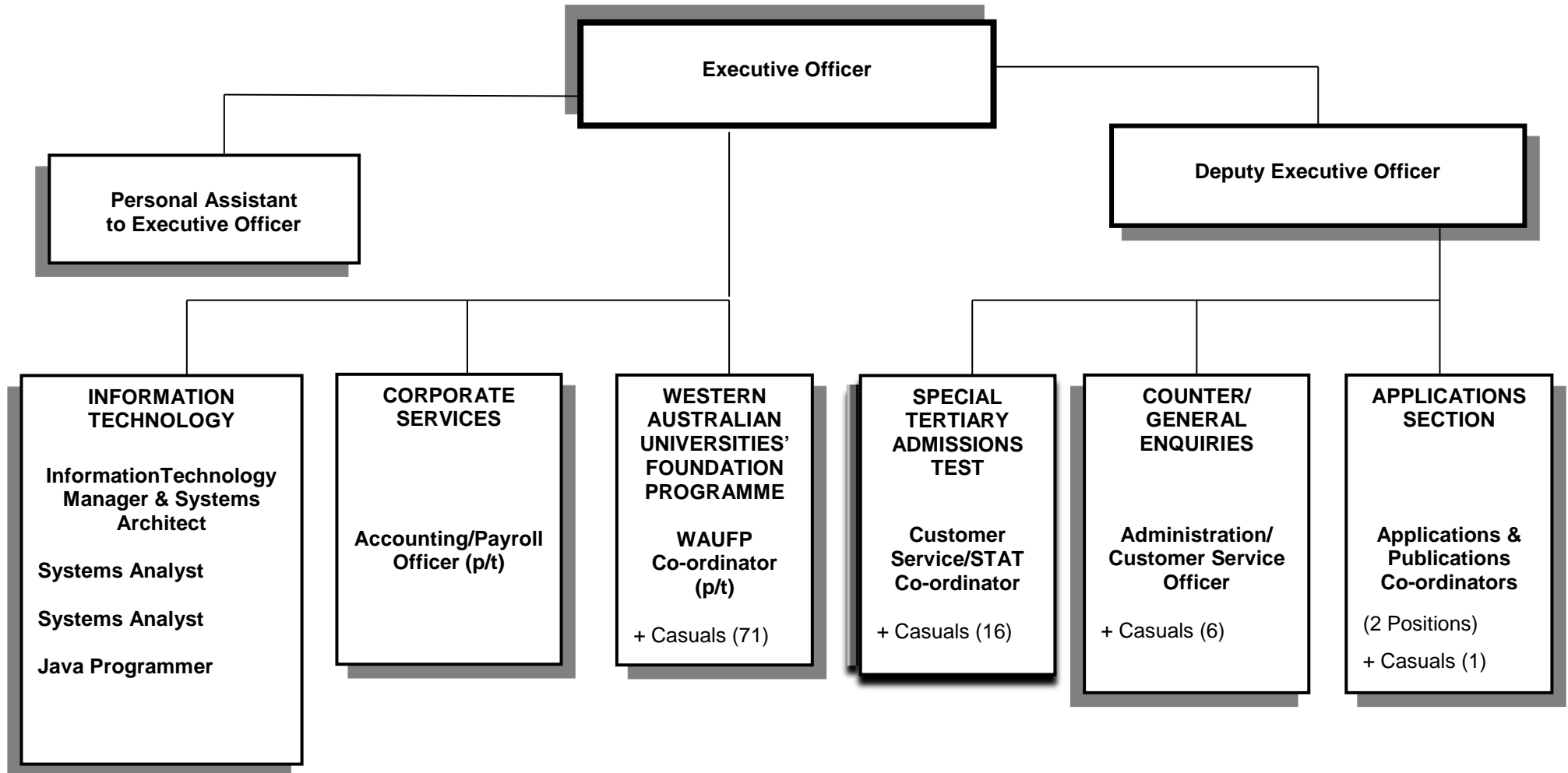


# TERTIARY INSTITUTIONS SERVICE CENTRE

(Incorporated in Western Australia)

Level 1, 100 Royal Street  
East Perth, Western Australia 6004  
Telephone (08) 9318 8000  
Facsimile (08) 9225 7050  
<http://www.tisc.edu.au/>

## TISC STAFFING STRUCTURE



## **ADMINISTRATION**

### **ACCOMMODATION**

TISC is located at Level 1,100 Royal Street, East Perth and occupies two floors of commercial building office space totalling 540sqm.

Limited parking is available for staff at the basement level of the building. TISC is however located close to public transport and parking.

The five (5) year lease is operable until April 2019.

### **FUNDING**

TISC is a non-profit organisation that is funded by fees charged for its services. The universities pay a contribution fee for the services they receive from TISC.

A net contribution was charged to the member universities for the period 1 July 2014 to 30 June 2015, which included a set fee for each direct entry applicant.

Each university pays a fixed component, plus a pro-rata component based on the number of student enrolments that were, or should have been, processed through the TISC joint system.

## INITIATIVES & DEVELOPMENTS

### GENERAL DEVELOPMENTS

The 2014/2015 admissions cycle saw the 'half-year' cohort, which had been moving through the WA school system since Year 1 in 2003, reach Year 12. This was a smaller than normal cohort of students due to the then-State government change in the school starting age. In 2003, only children born from 1 January 1997 to 30 June 1997 started school, and hence only those children were in Year 12 in 2014. TISC had anticipated the challenges fewer school leavers would present and budgeted for lower revenue from reduced application numbers. As the size of the overall age cohort is a parameter in the transformation of the Tertiary Entrance Aggregate (TEA) to ATAR, the procedure had to be modified to adjust for the smaller cohort. In practice, as TISC had estimated, the 'half-year' cohort was more like a 'two-thirds' cohort, but its effect will be felt for several more years as those students progress through university courses in smaller numbers than previous years.

During the year the Central Institute of Technology (CIT), a State Training Provider, became an Associate Member of TISC. CIT will have a page in the *2016 TISC Guide* and content on TISC's website.

The Western Australian Universities' Foundation Program (WAUFP) Mid-Year Entry program entered its second year with an intake in August 2014 of similar numbers of students to those in 2013.

TISC and the universities reviewed the format of the Universities Admission Advice Letter (UAAL), which notifies students their scaled scores, ATAR and eligibility for each university. It was decided to move away from the more generic format adopted in 2009 and return to providing students with specific eligibility messages for each university. The revised UAAL format could be one of the reasons for reported reduced Customer Service activity, as students had a better understanding of their results document.

### IT DEVELOPMENTS

The Past WA Results Collection system (PRC) and Course of Study Aggregation system (COSA) were modified to:

- Provide automatic eligibility to ECU's UniPrep courses without English competency or selection rank requirement.
- Provide eligibility to ECU for current-year WACE applicants who are eligible via the Cert-IV pathway.
- Extend UWA Broadway scheme to calculate a bonus selection rank for students who have attended a WA school specified as Tier A or Tier B by the UWA Broadway program and have an ATAR between 75.00 and 97.95.

The Experian Batch Pro address validation system was installed and commissioned a year ago to validate Australian addresses for university applicants. It is interfaced with TISC's backend application processing system QTISC. The Batch Pro runs on regular schedules flagging addresses as fully validated or those needing manual intervention. It has proven to be very useful in improving address data accuracy and in reducing manual workload for address corrections.

The Interstate Y12 Results and STAT aggregation programs were amended to set the eligibility indicator and notional ATAR of non-Year 12 (Type 3) applications who are eligible for (original) Broadway, Broadway-A or Broadway-B. The change was based on meeting English competence from Interstate/IB English results or from STAT scores respectively.

TISOnline underwent a number of enhancements to meet business requirements and operational improvements for public and administrative systems:

- Introduced a real-time Australian address validation feature into the TISOnline public application system by interfacing it with Experian Pro Web address validation system. It validates member addresses at the time of entry with a commercial Australian address database and is aimed at further improving data quality in TISC systems. Once online validation is fully operational the Batch Pro in the backend system may either be scaled down or completely decommissioned.

- Completely revamped client side validation mechanism to make use of rich dialogs for user interaction. It is aimed at advancing user experience and overcoming constraints that some new browsers impose on standard client dialogs.
- Implemented acceptance and processing of a new gender classification 'X' which defines Indeterminate/Intersex/Unspecified gender category.
- Extended mandatory email address entry requirement to Year 12 students during their first-time signing into TISCOOnline. This is expected to improve email address accuracy and help users who forget their passwords to gain quicker access to their accounts by requesting new passwords via email.
- Changed WAUFP online results publishing mechanism to PDF based instead of previous dynamic HTML driven. The results PDFs are secured and the process is now aligned with Year 12 results publishing mechanism.
- Implemented several enhancements to administrative systems including a facility to proactively identify any online payments with status discrepancy between payment-gateway and the online system, additions to member activity logging to further assist in improved user query response, and email reminders to members with incomplete applications approaching key deadlines.
- Redeveloped Online Updates' servlet based system which replicates certain changes in applicant data from backend QTISC system to TISCOOnline. The changes are applied in real-time maintaining transactional consistency in both systems. The new module utilises JBoss Middleware framework and is integrated into TISCOOnline application suite. This has helped in reducing the web server infrastructure footprint.

## IT SYSTEMS UPGRADE

A significant project was carried out to upgrade Systems and Communications Servers from Microsoft Windows server 2003 to Windows server 2012 spanning both primary and disaster recovery (DR) sites. The upgrade was necessary due to the end of the support period for Windows 2003 by Microsoft. The new servers were set up in a parallel virtual environment and commissioned in several stages to avoid interruption to continuity of the business processes.

- The systems upgrade involved Active Directory domain services, Network Policy Server for remote and wireless access and re-installation of a number of mission critical applications hosted on these servers. The new Active Directory services replicate in real-time between the sites and offer across site authentication with increased resilience and high-availability.
- The communication servers were upgraded from Microsoft Exchange Server 2007 to 2013. The set up comprises two nodes, Data Availability Group (DAG) between the sites, and automatic fail-over from primary to the DR site. The new set up continues to provide access to internal mail from the Internet via the on-site proxy based service.

A new Cisco Adaptive Security Appliance (ASA) was commissioned at the DR site which replaced the Cisco PIX firewall. The new appliance has immediately proven to be beneficial by providing increased connection reliability with large transfers across sites. At East Perth premises the existing Cisco security appliances were upgraded to the latest supported firmware.

Two new UPS were commissioned to supply uninterruptible central power to IT workstations for up to an hour. This better equips IT staff in administering central applications and servers infrastructures in case of general power failures especially near critical deadlines and has already proven useful during random power glitches causing equipment restarts.

A procedure was devised for a systematic shutdown/restart of servers and whole network infrastructure while mitigating unintentional downtimes due to inter-system dependencies. Various servers and network appliances were rearranged to maximise server room UPS power feed to high priority services such as the phone system.

## **CUSTOMER SERVICE**

During the 2014/2015 processing period, Customer Service experienced lower levels of activity with counter, telephone and email enquiries compared to the previous year. This year, the total number of counter enquiries from customers was 2,764, telephone enquiries were 8,773, and emails 4,163. This decrease can be attributed to lower numbers of non-Year 12 applicants and Year 12 applicants (the latter due to the 2014 school leavers being the 'half-year' cohort).

A new telephone system was installed in April 2014. There were a few 'teething problems' at the start of the admissions cycle which were resolved over the course of the year. Because of this the number of telephone enquiries stated above may not be a true reflection of the actual number of telephone enquiries received.

Email addresses were required for all university applications from 2014. This also reduced the number of password reset requests received over the telephone and through emails as passwords could be reset through the automated reset password function on the TISC website.

This year TISC also introduced a new policy whereby, after requesting appropriate identification, staff would give past students their STAT results or ATAR over the telephone. This is in accord with the Australian Privacy Principles on making personal information an organisation holds about a person available to that person on request.

### **Staffing**

One new Customer Service Officer (CSO) joined our five experienced officers in July 2014 to make up the team of 6 casual officers, with 2 casual staff members being rostered each day. During September, November, and January the CSOs were rostered more frequently than one day per week due to the increasing workload during these months.

Two training sessions were held in August 2014. During the sessions our CSOs are given comprehensive information to answer enquiries from our customers. Our CSOs are knowledgeable, responsive, and have delivered excellent service to our customers over the past year.

### **Emails**

We received 4,163 email enquiries this year compared to 4,295 in the previous year. This is a decrease of 3.1%. The busiest month was September, with 1,021 emails (24.5% of all emails received during July to February).

The acceptance of emailed STAT Booking Forms and Requests for Record of Results, begun in 2013, again proved popular. We received 403 (303) Record of Results requests and 659 (227) STAT Booking Forms. We also received 112 (107) emails with university application supporting documentation, although the email accounts set up to receive STAT Booking Forms and Results Requests were not intended to be used for this purpose.

### **Telephone**

Customer Service answered 8,773 (11,778) telephone enquiries from July 2014 to February 2015. This is a decrease of 25.5%. The busiest month was January 2015 with 1,632 (2,738) enquiries (18.6% of all calls answered during the busy period) followed by December 2014 with 1,533 enquiries (17.5% of enquiries answered). As stated earlier in the report, because of the problems with the installation of the new telephone system, these figures may not be accurate.

Despite the lower overall number of telephone enquiries, questions about admission requirements increased by 20.2% (from 391 to 490) and enquiries about registration/login increased 35.9% (from 184 to 287).

### **Counter**

Counter activity decreased from 3084 customers the previous year to 2,764 customers this year. This is a decrease of 10.4%. The majority of our customers were handing in supporting documentation for their university applications and STAT bookings in December/January.

The tables in Appendix B summarise the nature of the telephone, counter and email enquiries received by Customer Service during the eight-month busy period.

## SCHOOL CURRICULUM AND STANDARDS AUTHORITY LIAISON

Year 12 results and ATARs for 2014 were released on schedule, with TISC and SCSA staff again working to very tight deadlines. WA Year 12 results are released later than those of any other Australian state or territory. Although it is hoped that results can be released before Christmas eventually, this will not be achieved easily in the short term.

The Joint SCSA/TISC Scaling Policy Committee met on 10 March 2015. A review of scaling processes and alternative scaling methodologies, previously endorsed by the Committee, commenced in 2013. The review of scaling continues, with output from various methodologies expected to be available for review later in 2015. It is likely that AMS will continue to be used for scaling 2016 results.

From 2016 SCSA proposes not to standardise WACE raw examination marks or raw school marks. This will produce combined marks distributions for each course with significantly different means and standard deviations. As combined marks for each course are used as input into the AMS process, TISC is investigating the necessity of having to standardise combined marks before scaling.

## STATE TRAINING PROVIDER (TAFE) LIAISON

The table below shows the number and percentage of applicants for whom TISC collected current WA State Training Provider (TAFE) results and completion information.

	2015	2014	2013
<i>Applicants</i>	365	459	509
<i>Requests</i>	383	481	539
<i>% of all Other applicants</i>	6.1%	6.8%	6.6%
<i>% of all applicants</i>	2.6%	2.5%	2.6%

The number of WA State Training Provider collections has decreased by 20.5% compared to 2014, but is comparable with previous years in terms of percentage of non-school leaver applicants and total applicants.

## INTERSTATE LIAISON

### Certification of Documents

TISC continues to certify documents for applicants to submit to interstate admission centres. A small fee is charged. Other interstate centres reciprocate this service for TISC applicants.

## AUSTRALIAN LAW SCHOOLS ENTRANCE TEST

During October, TISC continues to hold one Australian Law Schools Entrance Test (ALSET) session on behalf of VTAC, for students who apply for admission to the law course at Deakin University. This session is usually run concurrently with a STAT session at Canning College. TISC charges an additional fee to each applicant to cover the cost of running the session.

## NATIONAL DATA COLLECTION OF APPLICATIONS AND OFFERS

TISC again participated in the federal government's national data collection of applications and offers for undergraduate university places for which applications are made through Tertiary Admission Centres (TACs). Data was transferred to the federal Department of Education and Training on five occasions from October 2014 to May 2015, on dates negotiated between ACTAC and the Department.

## **AUSTRALASIAN CONFERENCE OF TERTIARY ADMISSION CENTRES (ACTAC)**

Officers of each of the state's Tertiary Admission Centres meet twice a year to discuss common issues such as web development, customer services, etc and to confirm joint arrangements such as the Special Tertiary Admissions Test and Automated Results Transfer System (ARTS). The Executive Officer and Deputy Executive Officer attended meetings in October 2014 and, by teleconference, April 2015.

## APPLICATIONS STATISTICS - 2015 INTAKE

### APPLICATIONS

For 2015 admission, a total of 14,028 applications were processed (8,088 from WA Year 12 students). There was an overall decrease of 24.7% in the number of applicants compared with last year, with numbers of WA Year 12 applicants decreasing by 31.6% and non-WA Year 12 applicants decreasing by 12.6%. As mentioned previously in this report, the drop in Year 12 numbers in 2014 due to the 'half-year cohort' has made many of the usual statistical comparisons meaningless and trends difficult to identify.

**Table A: Main Round and Total Applications, 2013-2015**

	2015		2014		2013		% Change	
	Main Round	Total	Main Round	Total	Main Round	Total	2014-2015	2013-2014
WA Year 12*	8,057	8,088	11,780	11,829	11,741	11,762	-31.6%	+0.6%
Other (incl current IS Yr 12)	5,504	5,940 (607)	6,354	6,793 (578)	7,324	7,685 (664)	-12.6% (+5.0%)	-11.6% (-13.0%)
<b>TOTAL</b>	<b>13,561</b>	<b>14,028</b>	<b>18,134</b>	<b>18,622</b>	<b>19,065</b>	<b>19,447</b>	<b>-24.7%</b>	<b>-4.2%</b>
% of all WA Yr 12 students who applied to university		48.2%		50.6%		51.2%		

The decrease in WA Year 12 applicants was slightly less than the 31.9% decrease in the total number of Year 12s (from 24,289 to 16,548), with 4,235 fewer students achieving an ATAR in 2014 (8,018 compared with 12,253 in 2013). Proportionate to the number of Year 12 students, 52.4% gained an ATAR in 2013, compared with 47.8% in 2014, which is a substantial decrease. In 2014, stage 2 WACE examinations were optional. This will have contributed to the lower proportion of Year 12 students who achieved an ATAR.

ECU offered a Portfolio pathway into university again in 2014, and TISC accepted Portfolio applications for WA Year 12 students who expected to obtain an ATAR (ie were doing examinations in at least four courses at Stage 2 or 3). Portfolios were submitted direct to ECU. WA Year 12 students who would not obtain an ATAR (and Other Portfolio applicants) applied direct to ECU.

### PREFERENCES

The joint admissions procedure offers applicants the choice of submitting up to six preferences. Table B shows that over 30% of all applicants did use all six preferences.

**Table B: Applications by Preference, 2013-2015\*\***

Applications (% of all apps)	Preference					
	First	Second	Third	Fourth	Fifth	Sixth
<b>2015</b>	14,028 (100%)	11,270 (80.3%)	9,555 (68.1%)	7,823 (55.8%)	5,976 (42.6%)	4,387 (31.3%)
<b>2014</b>	18,621 (100%)	15,612 (83.8%)	13,465 (72.3%)	11,101 (59.6%)	8,654 (46.5%)	6,337 (34.0%)
<b>2013</b>	19,445 (100%)	16,173 (83.2%)	13,798 (71.0%)	11,419 (58.7%)	8,871 (45.6%)	6,494 (33.4%)



Table C below shows a 28.1% decrease in total enrolments (this figure includes deferrals) from 2013 to 2015. Due to the half-year cohort, all universities had decreased first and total preferences as well as total offers.

**Table C: Preferences, Offers & Enrolments (Including Deferrals) by Institution, 2013-2015\*\***

	Year	Total Preferences	First Preferences	Total Offers	Enrolments*	
					Total	% of offers
<b>Curtin</b>	2015	23,324	6,455	5,788	4,920	85.0
	2014	29,434	8,355	7,556	6,596	87.3
	2013	30,892	7,899	6,752	6,043	89.5
<b>ECU</b>	2015	9,084	1,535	1,706	1,314	77.0
	2014	14,503	2,497	2,679	2,151	80.3
	2013	16,536	3,345	3,383	2,756	81.5
<b>Murdoch</b>	2015	9,635	2,103	1,765	1,515	85.8
	2014	13,142	2,531	2,103	1,809	86.0
	2013	14,086	2,847	2,565	2,231	87.0
<b>UWA</b>	2015	10,996	3,935	2,997	2,580	86.1
	2014	14,173	5,238	4,206	3,803	90.4
	2013	14,686	5,354	4,223	3,815	90.3
<b>TOTAL</b>	2015	53,039	14,028	12,256	10,329	84.3
	2014	73,790	18,621	16,544	14,359	86.8
	2013	76,200	19,445	16,923	14,845	87.7

\*Includes deferrals.

\*\*Please refer to 'Final application, offer and enrolment data for 2015 admissions' on [www.tisc.edu.au](http://www.tisc.edu.au) under 'Application and Offer Statistics – 2014/2015' for full institutional details.

Table D below shows that the percentage of first preference enrolments from first preference offers was lower for all universities except Murdoch University in 2015.

**Table D: First Preference Enrolments\* as % of First Preference Offers, 2013-2015**

	2015	2014	2013
<b>Curtin</b>	88.1	89.8	91.6
<b>ECU</b>	83.0	84.8	86.1
<b>Murdoch</b>	90.2	89.6	90.3
<b>UWA</b>	87.8	92.0	92.4

\*Includes deferrals

## OFFERS

The universities made 12,253 offers over the two rounds, with 77.8% of all applicants who were made an offer receiving their first preference. Offers were made to 7,473 WA Year 12 students, or 92.4% of all WA Year 12 applicants. The total number of applicants decreased by 24.7% compared with that for last year and the number of offers made decreased by 25.9%. The number of offers to interstate Year 12 applicants was 293 compared to 290 last year, representing a slight increase of 1.0%.

**Table E: Main Round, New Second Round and Total Offers, 2013-2015**

This table compares offers made over the past three admissions periods.

(Note: The table below is as at 4 February 2015 and does not include all post-second round manual offers)

N° Receiving an Offer	2015			2014			2013			% Change	
	Main Round	New 2 <sup>nd</sup> Round	Total*	Main Round	New 2 <sup>nd</sup> Round	Total*	Main Round	New 2 <sup>nd</sup> Round	Total*	2014-2015	2013-2014
WA Year 12**	7,305	569	7,473	10,857	927	11,033	10,552	980	10,753	-32.3%	+2.6%
Other (Incl. Current I/S Year 12)	4,255	634	4,780 (293)	4,981	679	5,498 (290)	5,637	696	6,170 (370)	-13.1% (+1.0%)	-10.9% (-21.6%)
<b>TOTAL</b>	<b>11,560</b>	<b>1,203</b>	<b>12,253</b>	<b>15,838</b>	<b>1,606</b>	<b>16,531</b>	<b>16,189</b>	<b>1,676</b>	<b>16,923</b>	<b>-25.9%</b>	<b>-2.3%</b>
% Receiving an Offer	Main Round	New 2 <sup>nd</sup> Round	Total*	Main Round	New 2 <sup>nd</sup> Round	Total*	Main Round	New 2 <sup>nd</sup> Round	Total*		
% of All Applicants	85.3%		87.3%	87.3%		88.8%	84.9%		87.0%		
% of WA Year 12 Applicants	90.7%		92.4%	92.2%		93.3%	89.9%		91.4%		
% of 1 <sup>st</sup> Preference Offers	77.0%		77.8%	77.7%		79.3%	77.0%		78.0%		

\*\*Note: double counting of main round offer and replacement new second round offer to the same person has been removed from this total.

\*\*Note 'half-year cohort' effect.

## CHANGE OF PREFERENCES

Applicants were required to change preferences online, with TISC staff making manual changes to correct errors and for other reasons, including withdrawal of courses. In total, 9,158 changes of preference were made (a decrease of 35.9% compared with the previous year).

**Table F: Changes of Preference, 2013-2015**

The table below shows the number of preference changes.

	2015		2014	2013	% Change	
	to 29/12*	Total**	Total	Total	2014-2015	2013-2014
Online	5,071	8,803	13,123	13,226	-32.9%	-0.8%
TISC	221	355	518	1,053	-66.3%	-50.9%
<b>TOTAL</b>	<b>5,292</b>	<b>9,158</b>	<b>13,641</b>	<b>14,279</b>	<b>-35.9%</b>	<b>-4.5%</b>

\*Note: Release of WACE results

\*\*Note 'half-year cohort' effect.

The 'TISC' category covers manual changes by TISC staff and reflects not only correction of re-enrolment and category errors, but also any deletion of preferences due to the withdrawal of courses during the admission period. There was a decrease of 31.5% in manual changes overall, mainly due to fewer applicants. The decreasing number of course amendments from the universities (resulting in 42 preference changes compared with 65 in 2014 – a further 35.4% decrease after the 81.6% decrease last year) also contributed to the decrease.

## WA YEAR 12 POPULATION

The percentage of all Year 12 students (including mature age) applying for university for admission in 2015 decreased slightly. The percentage offered a place in 2015 who accepted their offer either by enrolling or deferring decreased slightly.

**Table G: WA Year 12 Population (Including Mature Age and Overseas), 2013-2015 Admissions**

	<b>Total</b>	<b>Applications (% of Year 12)</b>		<b>Offers (% of Applications)</b>		<b>Enrolments* (% of Offers)</b>	
<b>2015</b>	16,837	8,088	(48.0)	7,473	(92.4)	6,400	(85.6)
<b>2014</b>	24,273	11,828	(48.7)	11,037	(93.3)	9,840	(89.2)
<b>2013</b>	22,537	11,760	(52.2)	10,751	(91.4)	8,006	(74.5)

\*Includes deferrals

The median ATAR of Year 12 students who applied for university entry was 81.65, the median ATAR for Year 12 applicants who received an offer was 83.15, and the median ATAR for those who actually enrolled was 84.40.

The most popular courses studied by school leaver Year 12 students who received an ATAR were Mathematics (89.2%), English (81.9%), Chemistry (33.9%) and Human Biological Science (31.7%). The most common four course ATAR combination was Chemistry, Mathematics: Specialist, Mathematics and Physics (3.8% of candidates used this combination).

## APPLICANTS WITH INTERSTATE YEAR 12

Table H on the next page shows the number of applications and offers and subsequent enrolments, deferrals and lapses for interstate applicants. The number of offers to current year Interstate Year 12s was 314 compared with 290 last year, representing an increase of 8.28%. Enrolments as a percentage of offers for all applicants with interstate school results remained below 50%.

**Table H: 2014 Applicants with Interstate School Leaving Qualifications (All Years & Current Year)**

		<b>TOTAL</b>	<b>ACT</b>	<b>NSW</b>	<b>NT</b>	<b>QLD</b>	<b>SA</b>	<b>TAS</b>	<b>VIC</b>
<i>Applications</i>	<i>All Yrs</i>	1,198	40	333	82	188	131	64	360
	<i>Current Yr</i>	607	23	162	66	90	62	30	174
<i>Offers</i>	<i>All Yrs</i>	714	26	182	57	120	70	51	208
	<i>Current Yr</i>	314	14	57	45	45	27	21	84
<i>Offers as a % of applications</i>	<i>All Yrs</i>	59.6	65.0	54.7	69.5	63.8	53.4	79.7	57.8
	<i>Current Yr</i>	51.7	60.9	35.2	68.2	50.0	43.5	70.0	48.3
<i>Enrolments</i>	<i>All Yrs</i>	315	12	88	16	57	26	23	93
	<i>Current Yr</i>	67	3	13	10	14	4	8	15
<i>Enrolments as a % of offers</i>	<i>All Yrs</i>	44.1	46.2	48.4	28.1	47.5	37.1	45.1	44.7
	<i>Current Yr</i>	21.3	21.4	22.8	22.2	31.1	14.8	38.1	17.9
<i>Deferrals</i>	<i>All Yrs</i>	99	3	24	9	15	11	10	27
	<i>Current Yr</i>	47	3	11	8	3	7	3	12
<i>Deferrals as a % of offers</i>	<i>All Yrs</i>	13.9	11.5	13.2	15.8	12.5	15.7	19.6	13.0
	<i>Current Yr</i>	15.0	21.4	19.3	17.8	6.7	25.9	14.3	14.3
<i>Lapses</i>	<i>All Yrs</i>	300	10	70	32	48	33	18	88
	<i>Current Yr</i>	179	8	33	27	28	15	10	57
<i>Lapses as a % of offers</i>	<i>All Yrs</i>	42.0	38.5	38.5	56.1	40.0	47.1	35.3	42.3
	<i>Current Yr</i>	57.0	57.1	57.9	60.0	62.2	55.6	47.6	67.9

## OTHER APPLICANTS

Mature Age WA Year 12 consists of those applicants who were over 20 years of age before 1 March 2015, applying on the basis of an ATAR obtained in the current year (2014). Non-WA Year 12 includes all applicants who didn't complete WA Year 12 in the current year, and includes interstate school leavers.

Non-WA Year 12 applicants received a slightly higher percentage of offers to applications (80.5%) compared to the Mature Age WA Year 12 group (76.5%).

**Table I: Applications, Offers and Enrolments for Mature Age WA Year 12 and Non-WA Year 12 Applicants, 2014-2015**

	<b>Mature Age WA Yr 12</b>		<b>Non-WA Yr 12</b>	
	<b>2015</b>	<b>2014</b>	<b>2015</b>	<b>2014</b>
<b>Applications</b>	68	197	5,940	5,207
<b>Total Offers</b>	52	167	4,780	4,364
<b>(% of applications)</b>	76.5	84.8	80.5	83.8
<b>Total Enrolments</b>	39	137	3,530	3,655
<b>(% of offers)</b>	75.0	82.0	73.8	83.8
<b>1<sup>st</sup> Pref Offers</b>	30	96	4,071	3,792
<b>(% of applications)</b>	44.1	48.7	68.5	72.8
<b>1<sup>st</sup> Pref Enrolments</b>	25	73	3,181	2,977
<b>(% of 1<sup>st</sup> Pref offers)</b>	83.3	76.0	78.1	78.5
<b>Deferrals</b>	5	21	399	349
<b>(% of offers)</b>	9.6	12.6	8.3	8.0
<b>Lapses</b>	8	31	855	708
<b>(% of offers)</b>	15.4	18.6	17.9	16.2

The data in Table J below includes all applicants who declared New Zealand or other overseas school leaving qualifications, the International Baccalaureate (IB) or the STAT. Note that an applicant who completed high school overseas and then sat the STAT prior to application would be counted in both the STAT and Overseas data.

**Table J: Applications, Offers and Enrolments for those declaring New Zealand School Leaving, STAT, International Baccalaureate or Other Overseas School Leaving, 2014-2015**

	<b>New Zealand</b>		<b>STAT</b>		<b>IB</b>		<b>Overseas</b>	
	<b>2015</b>	<b>2014</b>	<b>2015</b>	<b>2014</b>	<b>2015</b>	<b>2014</b>	<b>2015</b>	<b>2014</b>
<i>Applications</i>	65	78	811	1,010	120	133	384	383
<i>(% of total applications)</i>	0.5	0.4	5.8	5.4	0.9	0.7	2.7	2.1
<i>Offers</i>	36	49	677	857	89	86	312	312
<i>(% of applications)</i>	55.4	6.3	83.5	84.9	74.2	64.7	81.3	81.5
<i>Enrolments</i>	21	32	535	683	36	39	217	216
<i>(% of offers)</i>	58.3	65.3	79.0	79.7	40.4	45.3	69.6	69.2
<i>Deferrals</i>	1	4	51	70	8	6	32	40
<i>(% of offers)</i>	2.8	8.2	7.5	8.2	9.0	7.0	10.3	12.8
<i>Lapses</i>	14	13	91	104	45	41	63	56
<i>(% of offers)</i>	38.9	16.5	13.4	12.1	50.6	47.7	20.2	17.9

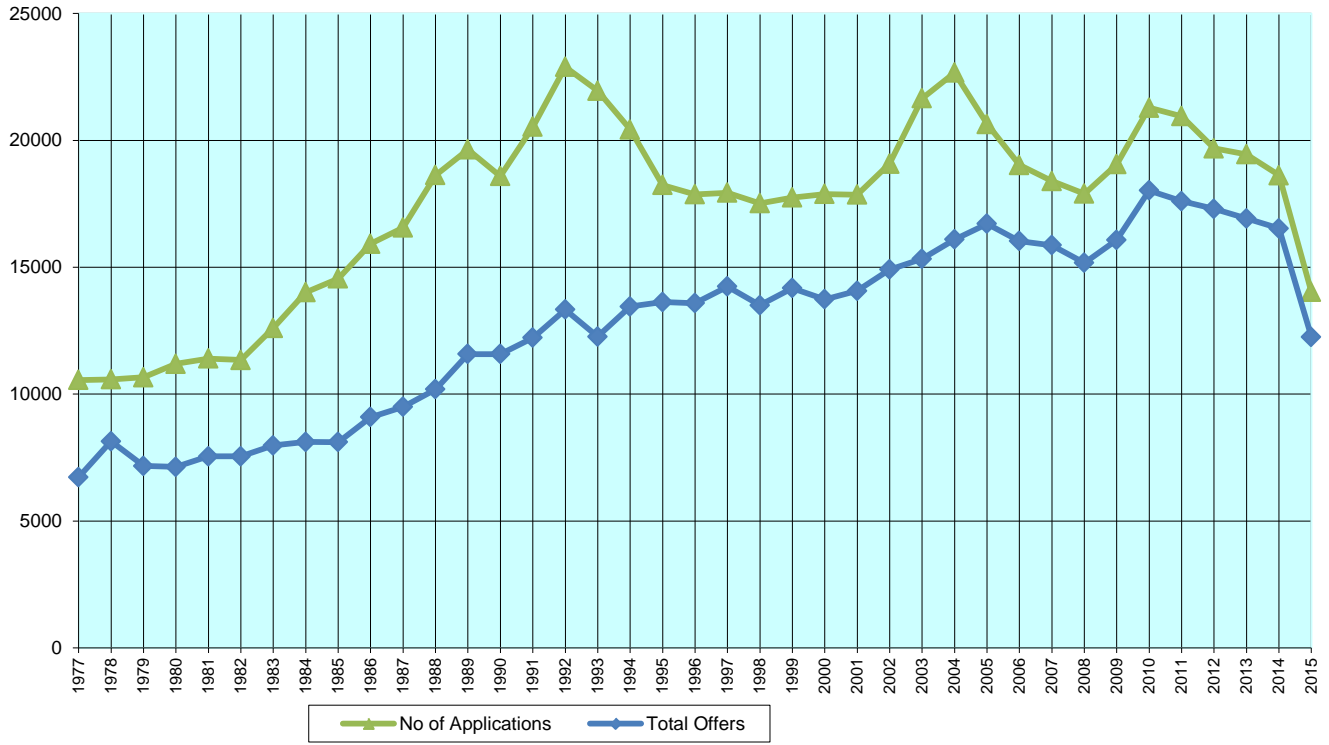
## FLOW PATTERN OF NON-WA YEAR 12 APPLICATIONS

The table below shows the number of non-WA Year 12 applications received and the total number that had been fully processed at the given dates.

**Table K: Flow of Non-WA Year 12 Applications Processing, 2013/2014 – 2014/2015**

	<b>2014/2015</b>			<b>2013/2014</b>		
	<b>Total Received</b>	<b>Total Processed</b>	<b>% Processed</b>	<b>Total Received</b>	<b>Total Processed</b>	<b>% Processed</b>
27 August	721	567	78.6	939	715	76.1
3 September	995	818	82.2	1,325	1,036	78.2
10 September	1,294	1,061	82.0	1,737	1,402	80.7
17 September	1,651	1,414	85.6	2,227	1,839	82.6
24 September	2,184	1,896	86.8	2,915	2,490	85.4
1 October	3,084	2,485	80.6	3,721	3,145	84.5
8 October	3,219	2,863	88.9	3,861	3,525	91.3
15 October	3,382	3,126	92.4	4,026	3,847	95.6
22 October	3,543	3,345	94.4	4,212	4,122	97.9
29 October	3,681	3,606	98.0	4,381	4,293	98.0
5 November	3,839	3,784	98.6	4,573	4,472	97.8
12 November	4,037	3,962	98.1	4,774	4,667	97.8
19 November	4,270	4,196	98.3	5,012	4,911	98.0
26 November	4,525	4,447	98.3	5,295	5,160	97.5
3 December	4,805	4,706	97.9	5,590	5,468	97.8
10 December	4,979	4,904	98.5	5,758	5,692	98.9
17 December	5,131	5,055	98.5	5,938	5,867	98.8
24 December	5,294	5,232	98.8	5,938	5,938	100
31 December	5,400	5,327	98.6	6,302	6,219	98.7
7 January	5,506	5,494	99.8	6,357	6,348	99.9
14 January	5,504	5,504	100	6,363	6,363	100
21 January	5,872	5,754	98.0	6,718	6,616	98.5
<b>FINAL</b>	5,940	5,940	100%	6,793	6,793	100%

## APPLICATIONS AND OFFER STATISTICS 1977-2015



## WEBSITE STATISTICS

### 2014/2015 SUMMARY

The TISCOOnline suite comprises of four systems which include Public, Intersystem Data Validation and Replication, Member Administration and Course Administration. The statistics included in this report are related to the Public system only and were extracted from the public web server access logs and TISCOOnline database.

The statistics were obtained from 1 July 2014 to 30 June 2015. During this period there were over 30 million hits resulting in around 11.2 million page views. The busiest periods recorded were the release of the WA Year 12 Results, release of main round offers and the week leading up to on-time application fee deadline respectively. These three events alone generated around 24% of the total number of hits and over 25% of the total page views.

### Snapshot for 2014/2015 Processing Year

Parameter	Statistics
Total Hits	30 million
Total Page Views	11.2 million
Total Unique Visitors	271,046 (Unique Internet Addresses)
Total Sessions	669,358
Total Duration for all Sessions	11 years
Total Data Transferred	171.93 Giga Bytes
Average Hits Per Day	83,534
Average Data Transferred Per Day	482.35 Mega Bytes
Maximum Concurrent Sessions	888
TISCOOnline Active Members	11,849

### Busiest Periods

Event	Period	Hits ▼	Page Views	Visitors	Size (Giga Bytes)
WA Year 12 Results & COPs <sup>[1]</sup>	28/12/14 - 03/01/15	3.5 million	1.2 million	27,671	15.76
Main Round Offers & COPs	15/01/15 - 21/01/15	2.3 million	0.8 million	22,333	10.07
On-time Application Deadline	24/09/14 - 30/09/14	1.6 million	0.8 million	12,781	6.30

<sup>[1]</sup> COP denotes Change of Preferences.

**Hits:** All valid accesses to the web server; eg an html page with 5 graphics, 1 style sheet and 1 JavaScript file will result in 7 hits each time this page is accessed.

**Page Views:** Number of times a page is accessed. Page views only include hits to the page; eg. If index.html includes 5 graphics, 1 style sheet and 1 JavaScript file it will be counted as 1 page view only.

**Size:** Total number of bytes transferred for hits or page views.

**Visitors:** Corresponds roughly to the total number of persons who visited the site. The figure is achieved by counting unique IP Addresses and therefore the same person may get counted multiple times if his/her IP address changes or he/she accesses the site from different computers. On the other hand multiple persons may get counted as a single visitor if they have a single point of internet access which most organisations do. Also note that if a single visitor views 10 different pages or the same page 10 times it will be counted as 10 page views and 1 visitor.

**Sessions:** The period of time a user interfaces with an application. Sessions are similar to visitors, except that they can timeout (20 minutes). If a visitor leaves the site and comes back before timeout, it is still a single session; otherwise it will count as two sessions. Concurrent sessions roughly correspond to the number of users accessing application simultaneously.

**Active Members:** Users registered with TISCOOnline and have successfully authenticated at least once.

## Busiest Days

The following table lists the 10 busiest days during 2014/2015 processing year, five of which are related to the on-time application deadline.

Date	Hits ▼	Page views	Visitors	Event
28/Dec/2014	1,529,809	488,013	13,368	First day of WA Year 12 results published
29/Dec/2014	767,531	287,808	8,939	Second day of WA Year 12 results published
15/Jan/2015	760,767	232,783	8,724	First day of main round offers published
16/Jan/2015	662,914	224,041	7,887	Second day of main round offers published
30/Dec/2014	326,935	111,902	4,803	Third day of WA Year 12 results published
29/Sep/2014	311,046	147,145	2,921	A day before on-time applications deadline
30/Sep/2014	307,565	145,884	2,932	Last day for on-time applications
02/Jan/2015	304,577	107,496	3,790	Leading up to main round applications and change of preferences deadline
19/Jan/2015	233,218	76,753	3,314	Leading up to second round applications and change of preferences deadline
28/Sep/2014	230,986	109,699	2,303	Leading up to on-time applications deadline



## Top 20 Most Relevant Pages/Services by Page Views

The 2014/2015 processing year followed a general trend from previous years in terms of service utilisation. The table below lists the top 20 most utilised services for the processing year.

#	Page Views ▼	Page/Service Description
1	469,227	TISC Home page – Latest News
2	443,372	Course search
3	197,331	Post authentication member welcome page
4	173,729	ATAR Calculator
5	130,421	Individual course detail page
6	121,167	WA Year 12 Results view attempts by authenticated users
7	108,354	Information about requirements and preparation for applying online
8	72,183	About ATAR information page
9	56,646	Frequently Asked Questions
10	56,527	University offer view attempts (both success and unsuccessful attempts)
11	55,568	How to apply online
12	37,594	Forgotten/new password request
13	36,942	2003-onwards ATAR cut-offs ranks
14	34,756	Important dates (TISC Calendar)
15	28,581	Information about university admission
16	26,442	My Course Folder <sup>[1]</sup>
17	19,163	Change of preferences committed page
18	16,357	Downloads page
19	3,935	Subscription Request
20	2,208	Information about ordering UAAL

<sup>[1]</sup> My Course Folder Service

A registered user feature, which facilitates short listing courses for reference purpose. Users can prioritise courses within the folder and transfer selected courses to specified preferences in the application. This processing year 2,139 users utilised this feature short listing 327 unique courses with an average of 3 courses per user.

## MONTHLY REPORT

This report shows statistics for each month for the 2014/2015 processing period. The table lists monthly total for each category, whereas the graph illustrates monthly usage as a percentage of total over the measured period in a corresponding category.

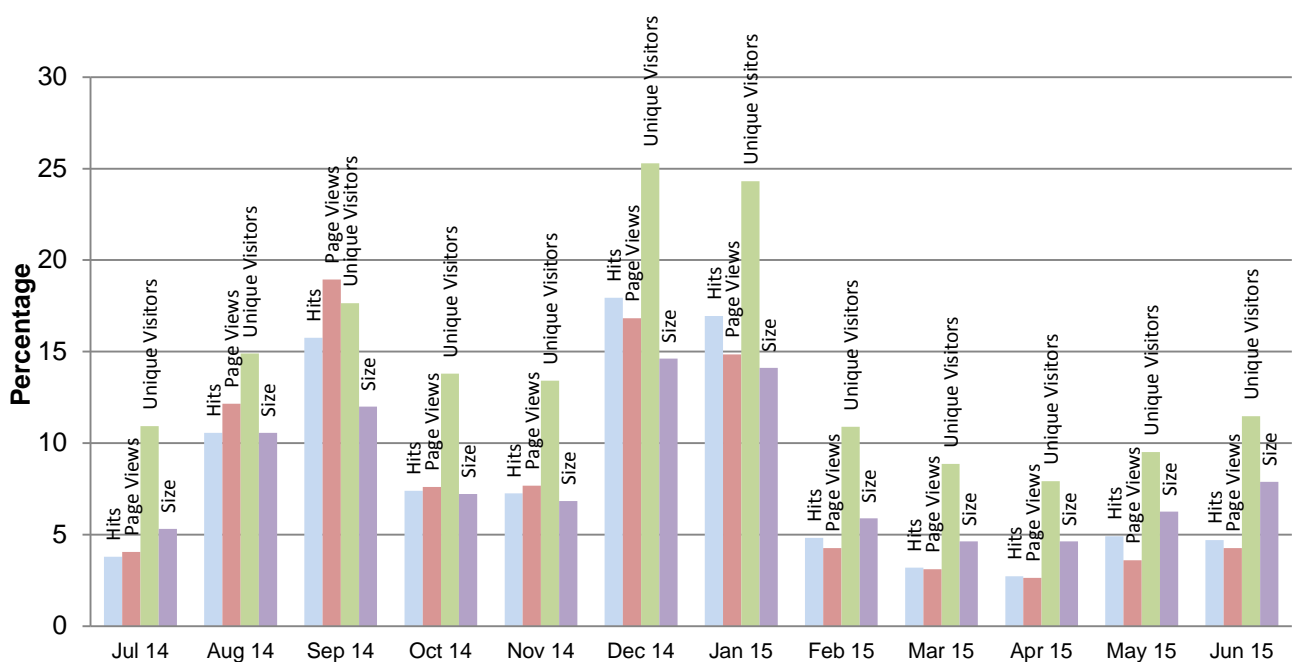
December 2014, release of WA Year 12 results, registered the highest with 17.94% of total hits.

January 2015 registered at the second highest with 16.95% of total hits due to events relating to applications and change of preferences deadlines for main and second round offers, and the release of main round offers.

September 2014 registered at the third highest hits (15.76% of total), highlighting a rush to beat the deadline for on-time applications.

Month	Hits	Page views	Unique Visitors	Size (Giga Bytes)
Jul 14	1,155,361	456,137	22,763	9.13
Aug 14	3,219,048	1,365,151	31,026	18.16
Sep 14	4,804,869	2,128,023	36,747	20.64
Oct 14	2,253,188	854,862	28,736	12.43
Nov 14	2,210,416	862,139	27,938	11.76
Dec 14	5,468,996	1,890,531	52,693	25.15
Jan 15	5,168,232	1,669,525	50,645	24.28
Feb 15	1,471,654	479,806	22,693	10.13
Mar 15	974,743	348,712	18,456	7.96
Apr 15	831,805	297,397	16,498	7.96
May 15	1,497,788	405,560	19,827	10.77
Jun 15	1,433,956	480,249	23,882	13.57
<b>Total</b>	<b>30,490,056</b>	<b>11,238,092</b>	-	<b>171.94</b>

Monthly Usage in Percentage



## UNIVERSITY APPLICATIONS

Since the opening on 11 August 2014 a total of 14,028 web applications (8,088 WA Year 12 and 5,940 Non-WA Year 12) were processed for university admission, out of which 13,613 (97.04%) were paid online and 415 (2.96%) were paid using alternative payment methods via TISC. The upward trend in online payment method has continued since the inauguration of TISCONline; this year 276 fewer applications were paid via TISC than the last year.

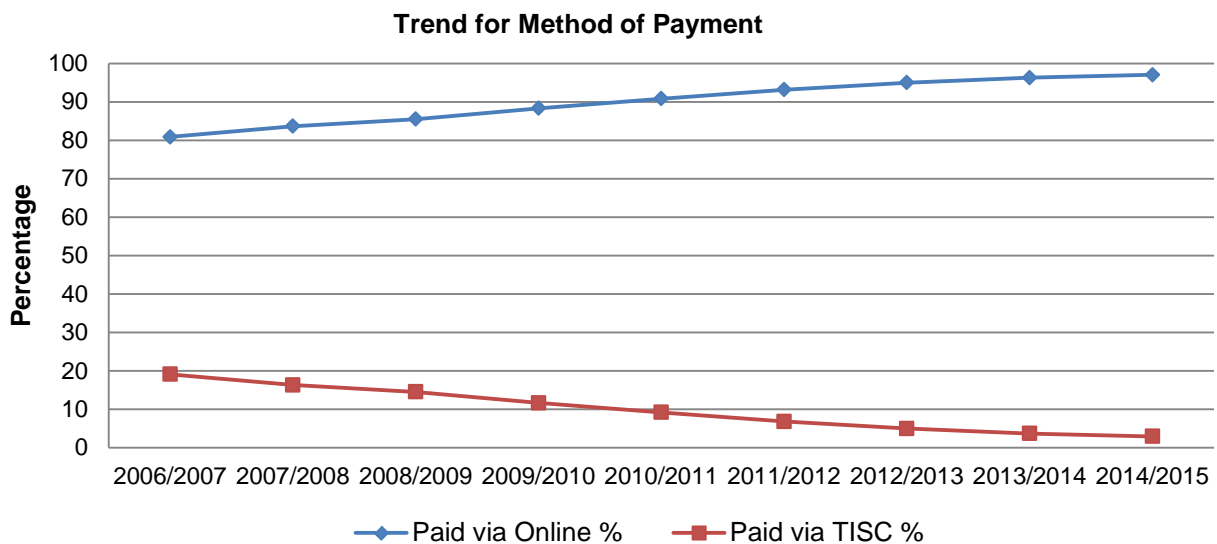
All applicants who wish to change preferences must do so online. TISC staffs make manual changes for error corrections, withdrawals of courses and other reasons. This year a total of 96.86% changes of preferences were committed via online and 3.14% were done by TISC staff.

### Applications and Change of Preferences Committed Online

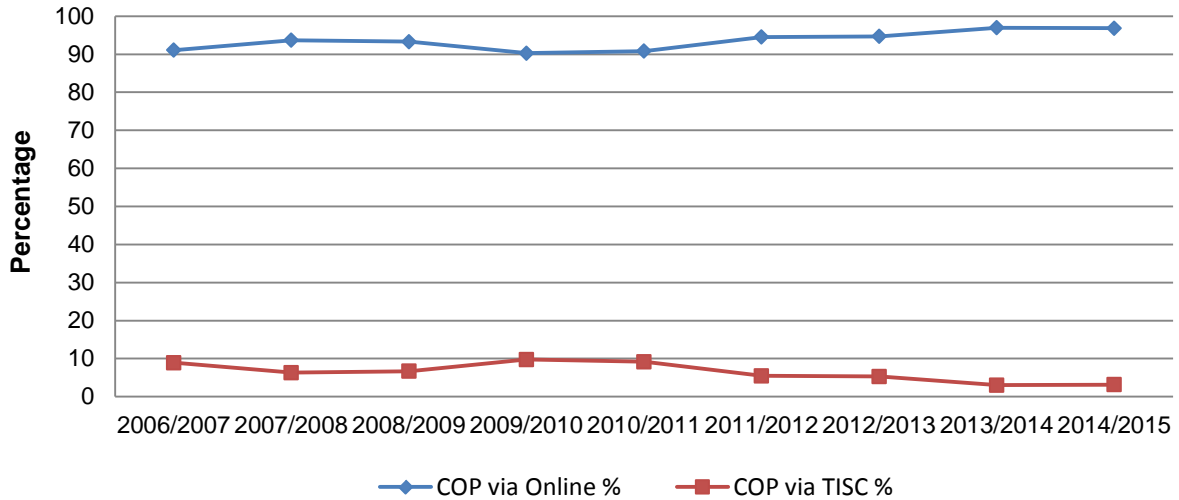
Applications				Changes of Preferences Committed		
Total Paid	Paid Online	Paid at TISC	Declared but not Paid	Via Online	By TISC	Total <sup>[1]</sup>
14,028	13,613	415	1,030	12,024	390	12,414

<sup>[1]</sup> Includes an applicant's multiple change of preferences on the same day.

The graphs below show trend for method of payments and change of preferences for online applications since TISCONline became the primary method for lodgement of applications.



### Trend for Change of Preferences

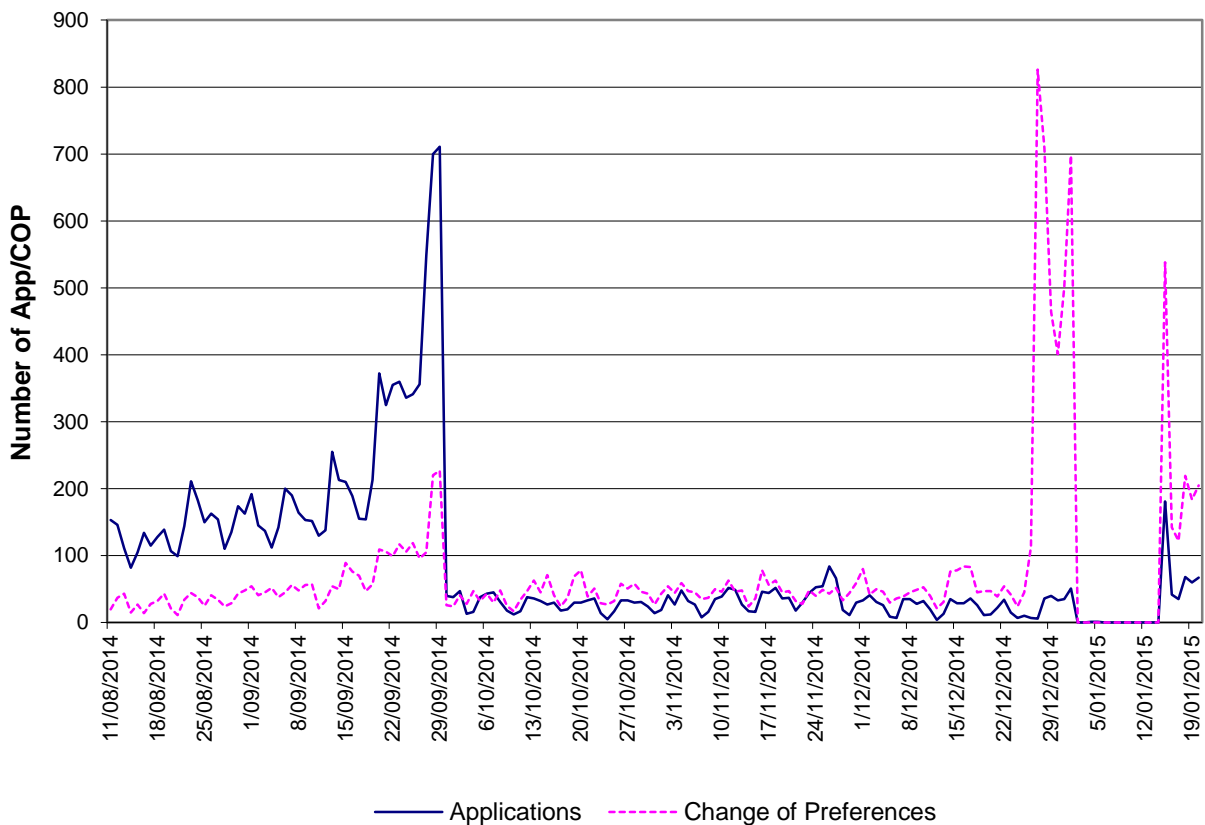


### Applications and Change of Preferences by Date

The graph below shows daily activity for the number of applications submitted and changes of preferences committed online. A very high jump in applications towards end of September 2014 reflects a rush to beat the on-time application deadline at 11:00pm 30 September.

The change of preferences show increased activity from the release of WA Year 12 results (28 December 2014) until closing date for main round offers preparation (2 January 2015), and from opening date for second round offers preparation (16 January 2015) until the final closing date (11:00pm 21 January 2015).

### Applications and Change of Preferences by Date



## WA YEAR 12 RESULTS AND ATARS

The WA Year 12 results and ATARs were released at 3:45pm 28 December 2014, a day earlier than the publicised date.

Since the opening a total of 9,513 students have viewed their results 30,785 times. The busiest day recorded was 28 December when results were viewed 16,033 times by 7,728 students. This day also registered over 1.5 million hits, over 0.48 million page views and 13,368 unique visitors to the website. The following two tables list daily result statistics for a 7 day period from the opening date, and hourly statistics for the busiest day.

### Results viewed by Date

Date/Time ▲	Results Views	Students
28/Dec/2014	16,033	7,728
29/Dec/2014	5,626	3,105
30/Dec/2014	1,557	956
31/Dec/2014	710	502
1/Jan/2015	554	385
2/Jan/2015	661	489
3/Jan/2015	286	210

### Results viewed on 28 December by Hour

Hour of Day ▲	Results Views	Students
3:00 PM – 4:00 PM	460	351
4:00 PM – 5:00 PM	4,800	2,980
5:00 PM – 6:00 PM	3,724	2,285
6:00 PM – 7:00 PM	2,252	1,475
7:00 PM – 8:00 PM	1,509	976
8:00 PM – 9:00 PM	1,140	763
9:00 PM – 10:00 PM	932	594
10:00 PM – 11:00 PM	734	470
11:00 PM – Midnight	482	328

**Page Views:** Number of times a page is accessed. Page views only include hits to the page; eg. If index.html includes 5 graphics, 1 style sheet and 1 JavaScript file it will be counted as 1 page view only.

**Visitors:** Corresponds roughly to the total number of persons who visited the site. The figure is achieved by counting unique IP Addresses and therefore the same person may get counted multiple times if his/her IP address changes or he/she accesses the site from different computers. On the other hand multiple persons may get counted as a single visitor if they have a single point of internet access which most organisations do. Also note that if a single visitor views 10 different pages or the same page 10 times it will be counted as 10 page views and 1 visitor.

## UNIVERSITY OFFERS

The main round offers were published online at 5:00pm 15 January 2015 and 2<sup>nd</sup> round offers were published at 5:00pm 2 February 2015. Since offers opening a total of 8,633 applicants have viewed their main round offers for 28,527 times, and 1,191 applicants have viewed their second round offers for 2,804 times.

The busiest period recorded was between 15 and 16 January which registered 16,072 offer views by 7,493 applicants. Overall, these two days recorded over 1.4 million hits, over 0.45 million page views and 14,025 unique visitors. The busiest hours on these days were between 5pm to midnight on 15 January and between 5am to 7pm on 16 January.

### Main Round Offers viewed by Date

Date/Time ▲	Offer Views	Applicants
15/Jan/2015	9,020	5,081
16/Jan/2015	7,052	3,817
17/Jan/2015	916	623
18/Jan/2015	690	488
19/Jan/2015	1,092	737
20/Jan/2015	965	605
21/Jan/2015	945	603

### Second Round Offers viewed by Date

Date/Time ▲	Offer Views	Applicants
2/Feb/2015	917	463
3/Feb/2015	1,316	750

**Page Views:** Number of times a page is accessed. Page views only include hits to the page; eg. If index.html includes 5 graphics, 1 style sheet and 1 JavaScript file it will be counted as 1 page view only.

**Visitors:** Corresponds roughly to the total number of persons who visited the site. The figure is achieved by counting unique IP Addresses and therefore the same person may get counted multiple times if his/her IP address changes or he/she accesses the site from different computers. On the other hand multiple persons may get counted as a single visitor if they have a single point of internet access which most organisations do. Also note that if a single visitor views 10 different pages or the same page 10 times it will be counted as 10 page views and 1 visitor.

## WAUFP RESULTS

The WAUFP and WAUFP Fast Track Results were published online at 3:30pm 10 December 2014. Since the opening a total of 147 WAUFP candidates have viewed their results 447 times.

### WAUFP Results viewed by Date

Date/Time ▲	Results Views	Students
10/Dec/2014	177	83
11/Dec/2014	143	77
12/Dec/2014	37	25
13/Dec/2014	8	7
14/Dec/2014	5	4
15/Dec/2014	8	5
16/Dec/2014	15	11

Starting from 2013, a Mid-Year WAUFP program has been introduced. Results for the Mid-Year WAUFP were published at 10:00am 19 June 2015. A total of 17 candidates participated in the Mid-Year program, out of which 16 viewed their results online.

## UAAL HARDCOPY ORDERS

This year 1,624 students ordered 1,930 Universities Admission Advice Letter (UAAL) hardcopies via TISOnline by online credit card payment.

## TISCONLINE STATIC CONTENT SEARCH

The content search facility allows users to search static contents within TISOnline. This year a total of 15,460 search queries have been committed including 14,573 distinct phrases. The highest number of search queries in a day (488) was recorded on 28 December 2014 for Year 12 results opening. The top five most relevant searches this year were "uniready", "medical+imaging", "preferences", "primary+education", and "uaal".

## BROWSER COMPATIBILITY

TISOnline has been fully tested with four leading Internet browsers, which are listed below with usage statistics.

Browser	Hits ▼	Page Views	Visitors
Chrome	10.81 million	3.89 million	110,947
Safari	10.48 million	3.21 million	9,991
Internet Explorer	2.42 million	1.01 million	8,381
Firefox	2.40 million	0.92 million	8,338

## MOBILE DEVICES COMPATIBILITY

Traffic from mobile devices has continued to increase. TISOnline has been tested to function on default browsers of leading portable devices running Apple iOS and Google's Android operating system.

Mobile OS	Hits ▼	Page Views	Visitors
Apple iOS devices	5.62 million	1.70 million	8,351
Google Android devices	1.47 million	0.43 million	8,446

## WEB REFERRALS

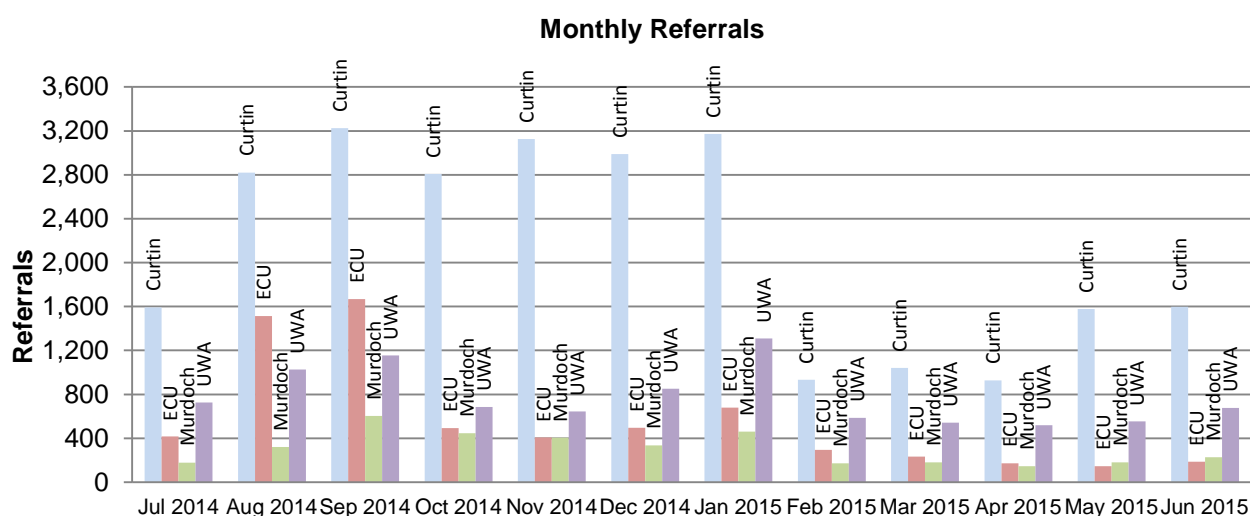
The referral statistics represent traffic to TISOnline from a direct link on external websites. It helps to identify major sources of external traffic as opposed to direct navigation to TISOnline. The figures listed below are aggregated across all websites, per organisation, hosted under primary or sub domains as well as known associated websites hosted under different domain names.

### Referrals from Member Universities

This year overall 19,035 unique visitors were referred to TISOnline from the member universities' websites, covering 10,584 from Curtin, 5,533 from ECU, 3,058 from Murdoch and 7,495 from UWA. The Curtin figures include referrals from Studentbox, a website targeted at high school students and run by Curtin. The Studentbox website alone referred 4,215 unique visitors for a total of 5,952 times. The table and graphs below shows monthly statistics for 2014/2015 processing period.

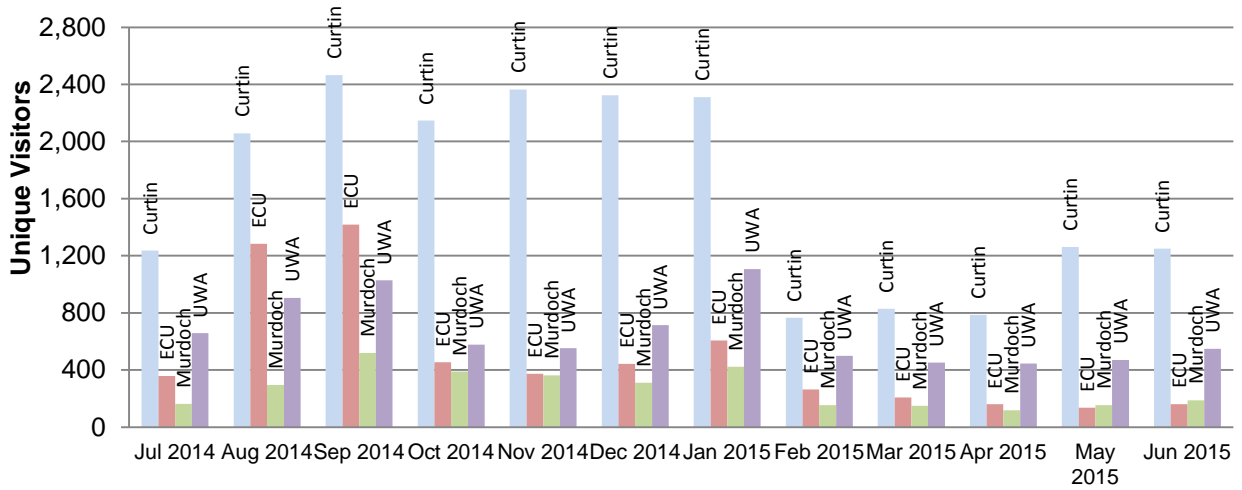
Month	Curtin		ECU		Murdoch		UWA		Total Referrals <sup>[1]</sup>
	Referrals	Visitors	Referrals	Visitors	Referrals	Visitors	Referrals	Visitors	
Jul 2014	1,593	1,236	416	359	179	164	725	658	2,913
Aug 2014	2,821	2,057	1,513	1,284	321	296	1,026	906	5,681
Sep 2014	3,224	2,464	1,669	1,418	603	519	1,156	1,028	6,652
Oct 2014	2,809	2,146	492	454	445	389	684	578	4,430
Nov 2014	3,126	2,365	408	374	405	362	644	553	4,583
Dec 2014	2,988	2,323	497	443	334	311	852	714	4,671
Jan 2015	3,172	2,311	679	607	461	423	1,309	1,107	5,621
Feb 2015	932	767	295	263	173	155	585	500	1,985
Mar 2015	1,041	828	232	208	181	149	541	453	1,995
Apr 2015	928	787	173	160	147	119	520	445	1,768
May 2015	1,577	1,262	147	137	181	154	554	470	2,459
Jun 2015	1,597	1,249	187	160	228	188	677	549	2,689
<b>Total Referrals<sup>[1]</sup></b>	<b>25,808</b>	-	<b>6,708</b>	-	<b>3,658</b>	-	<b>9,273</b>	-	<b>45,447</b>

<sup>[1]</sup> Represents referral to contents pages, eg a link to the TISOnline homepage.



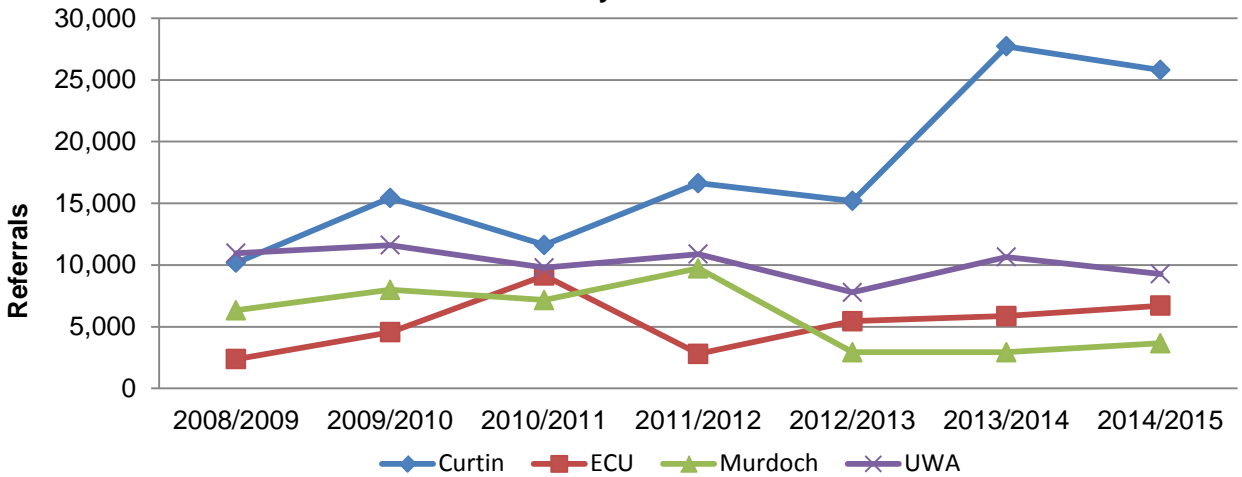


### Monthly Unique Visitors

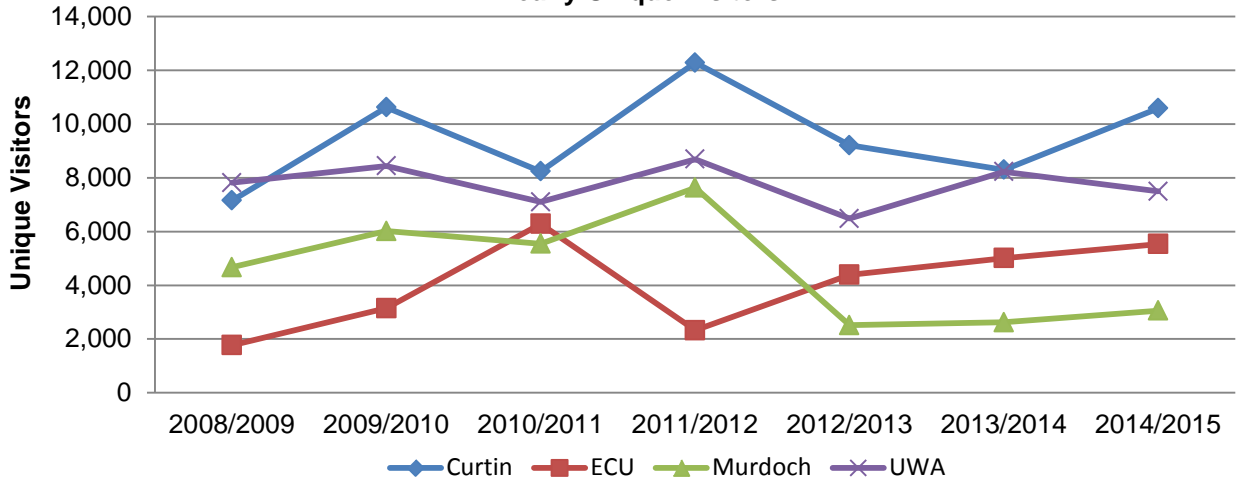


The graphs below show referral movement for member universities over the last seven years. The noticeable variation in 2010/2011 relates to the first year of new TISCONline, where links to individual pages had not yet been fully updated to conform to new TISCONline.

### Yearly Referrals



### Yearly Unique Visitors



## **Referrals from other Major Websites**

Two non-university websites with noticeable referral statistics were Facebook, with 3,042 referrals by 2,062 visitors, and School Curriculum and Standards Authority (SCSA), with 1,159 referrals by 1,000 visitors. Compared to last year both sites registered a decline in referrals; Facebook referrals were down by 9.7% and SCSA by 27.9%.

## **Referrals from Major Search Engines and Search Phrases**

These referrals represent traffic where users search a phrase via a search engine and then follow a link in the results to TISCOOnline. Google registered the highest referrals at 86.5% (94,598 hits) followed by Bing at 12.2% (13,343 hits) and Yahoo at 1.3% (1,382 hits). The top five search phrases recorded were "TISC" (11,931 hits), "ATAR Calculator" (677 hits), "www.tisc.edu.au" (455 hits), "TISC ATAR Calculator" (402 hits) and "STAT Test WA" (352 hits).

## **Direct Access (No Referrals)**

This represents traffic where users visit TISCOOnline directly, eg by typing a URL in the browser address bar, by opening a bookmark or by clicking a link in an email. This year around 1.93 million direct visits were recorded by 9,960 unique visitors.

## **EMAIL SUBSCRIPTION SERVICE UPDATES**

A total of 2,608 subscribers are currently active on TISCUUpdates recipient list (2,789 in June 2014). Since July 2014, a total of 354 new subscribers have signed up.

## SPECIAL TERTIARY ADMISSIONS TEST

The Special Tertiary Admissions Test (STAT) is an aptitude test designed to assess a range of competencies considered important for success in tertiary study. Many tertiary institutions in Australia use STAT as part of their admissions procedures for mature-age applicants.

TISC uses two tests: a Multiple Choice test (STAT MC) and a Written English test (STAT WE). STAT MC is a two-hour test containing 70 questions, half of which have a verbal emphasis (social science/humanities) while the other half have a quantitative emphasis (mathematical/science). STAT WE is a one-hour written English test, consisting of two short essay questions. Part A is a public affairs issue that invites argument, while Part B asks candidates to write from a more personal point of view. Each section gives a choice of four topics.

Both tests are produced and marked by the Australian Council for Educational Research (ACER) in Victoria. Each year a number of questions in the test papers are changed so that all questions are replaced over a five-year period.

All interstate results are sent to TISC which places them into a national database.

Overseas test sessions are all administered by ACER, which then forwards the results to TISC. The information is entered into the national database by TISC, which produces results letters. These are then despatched to candidates. ACER also organises a number of special sittings in Victoria every year. Results for these sessions are also sent to TISC and processed in the same way as for the overseas sessions.

### STAT ENROLMENTS

In the 2014 STAT year 1720 candidates attended STAT (this includes 299 school leaver candidates who sat in January). This is a decrease on the previous year when 1,995 candidates sat STAT.

The following table shows the breakdown of enrolments in each test as well as a comparison with previous years:

	2012		2013		2014	
	Booked	Attended	Booked	Attended	Booked	Attended
Written English & Multiple Choice	1,540	1,437	1,422	1,321	1,132	1,070
Multiple Choice only*	241	251	246	252	188	194
Written English only	440	438	423	422	455	456
Multiple Choice Total	1,781	1,688	1,668	1,573	1,320	1,264
Written English Total	1,980	1,875	1,845	1,743	1,587	1,526
Total Number of Candidates	2,221	2,126	2,091	1,995	1,775	1,720

\* From the table, it can be seen that the numbers booked to sit only the Multiple Choice test are less than those who actually sat the test. This is because some candidates enrol in both the Multiple Choice and the Written English tests, but then leave after the Multiple Choice section and do not reapply to sit the Written English test.

### STAT SCORES

From 2010 ACER changed the methodology of STAT scores from that used previously. This meant that STAT scores from May 2010 onwards had a different meaning from previous years (1996-2009). The minimum STAT scores required by the universities for candidates with results from 2010 onwards are as follows:

	Minimum MC score	Minimum WE Score
Curtin University	135 (Verbal or Quantitative)	140
Edith Cowan University	110 (Verbal or Quantitative)	140
Murdoch University	135 (Verbal or Quantitative)	140
The University of Western Australia:		
STAT alone entry	140 (Verbal Only)	160
Competence in English	140 (Verbal Only)	140

In 2014, 835 (78.0%) of the 1,070 candidates who sat both STAT WE and STAT MC met the minimum requirement for admission to ECU and 827 (77.3%) for Murdoch and Curtin universities.

Of the 1,070 candidates who sat STAT MC and STAT WE, 276 (25.8%) obtained the minimum marks of 140 in STAT MC (Verbal) and 160 in STAT WE required by UWA.

With the changed methodology there is the possibility that there may be scores slightly below 100 and slightly above 200.

The results are shown below in table form:

	<b>Minimum Score</b>	<b>Maximum Score</b>	<b>Mean</b>	<b>Standard Deviation</b>
<b>STAT MC</b>	109	193	149.64	11.42
<b>STAT WE</b>	102	196	150.17	11.42

### **TESTING SESSIONS IN THE METROPOLITAN AREA**

There were ten metropolitan sessions run throughout the year at Canning College in Bentley. The dates for these are shown below:

10 May 2014	18 October 2014
24 May 2014	8 November 2014
21 June 2014	29 November 2014
16 August 2014	3 January 2015
20 September 2014	31 January 2015

The first three sessions were held in semester one, primarily for second semester university or State Training Provider (formerly TAFE) entry.

An extra January session was held again this year. 84 candidates booked for this session and 79 attended. Results were not available in time for the second round of offers.

There were two special sessions (one in May, the other in November) held on a Friday morning at TISC for people who, for work or religious reasons, could not sit STAT on a Saturday. These two sessions help minimise the number of individual sittings at TISC for candidates in this category. The first of these sessions was held on 16 May 2014 and 1 candidate sat both STAT MC and STAT WE (4 in May 2013). The second session was held on 14 November 2014 and 8 candidates sat STAT MC and STAT WE (9 in November 2013).

Sessions were also organised for 14 candidates with special needs where a disability was involved:

- 5 candidates who only required extra time did their test at Canning College. They were school leavers invited to sit STAT in order to meet the competence in English requirement of the universities.
- The remaining 9 candidates sat the test at TISC.

No additional charge was raised by TISC for organising and running the sessions for these 14 candidates.

### **SCHEDULED TESTING SESSIONS IN REGIONAL AREAS**

Tests in regional areas were held during a specified week in both May and November 2014. This week is advertised every year on the STAT booking form. Venues and supervisors are organised by the STAT Coordinator.

In May 2014, 7 sessions were held in 7 regional centres, and in November 2014, 10 sessions were held in 10 centres including 5 of the centres where a session was held in May 2014.

A similar number of STAT sessions were held as in the previous year and the overall numbers sitting in a regional area were also similar. 58 candidates enrolled to sit the STAT in regional areas in 2014 compared to 60 in 2013. Enrolments for the 2014 (2013) country testing sessions were as follows:

Centre	Number Sitting	Centre	Number Sitting
Albany	9 (13)	Kalgoorlie	6 (3)
Broome	4 (1)	Karratha	1 (3)
Bunbury	17 (20)	Merredin	1 (0)
Derby	1 (0)	Narrogin	1 (0)
Denham (Shark Bay)	1 (0)	Pannawonica	1 (0)
Geraldton	14 (12)	Port Hedland	2 (3)
		<b>Total*</b>	<b>58</b>

\* This number includes candidates who sat only one test (STAT MC or STAT WE) and candidates who sat both tests.

Below is a comparison of the total number of enrolments for the country STAT from 2010 through to 2014.

	2010	2011	2012	2013	2014
STAT Multiple Choice	123	84	72	55	54
STAT Written English	127	82	69	56	54

## SCHEDULED TESTING SESSIONS IN PRISONS

TISC has a very flexible policy for scheduling testing sessions in prisons as the prisons have Education Officers available to supervise the candidates. Contact is made with the Education Officers each year and sessions can be held on a week day between May and November each year. For the last three years, only a few prisons have held STAT sessions each year (2 prisons in 2014, 2 prisons in 2013, 2 prisons in 2012).

During the 2014 STAT year two sessions were run in two prisons:

Location	Attended
Hakea	1
Wooroloo	1
<b>Total</b>	<b>2</b>

## SPECIAL USE OF STAT

A large number of candidates sitting the 3 January 2015 session were Year 12 students who had achieved a competitive ATAR but had not met competence in English. Results were available in time for the main round of university offers.

The University of Western Australia requires Year 12 students to take both STAT Written English and STAT Multiple Choice tests and to achieve a mark of 140 or better in both STAT WE and STAT MC (Verbal component). The other three public universities require Year 12 students to sit STAT WE only and to achieve a mark of 140 or better in this test.

There were 299 Year 12 students sitting the STAT in January 2015, of whom 197 sat STAT WE only. The number of students sitting only STAT WE decreased by 21.2% on the 250 who sat in the previous year. The lower number can be attributed to the 2014 school leavers being the 'half-year' cohort.

81.7% of those who used only STAT WE to meet literacy actually met this requirement. 62.7% of those using both STAT MC and STAT WE met competence in English for UWA.

The figures for 2014 (2013) are shown in the table below.

Attended	STAT MC + WE		STAT WE only	
	118 (142)		250 (293)	
	Population	%	Population	%
<b>Met UWA requirement of WE mark and MC verbal mark <math>\geq 140</math></b>	64 (93)	62.7 (78.8)	-	-
<b>Met Curtin, ECU and Murdoch requirement of WE mark <math>\geq 140</math></b>	78 (107)	76.5 (90.7)	161 (209)	81.7 (83.6)

*\*NB: Among the 37.3% who did not meet the literacy requirement for UWA via STAT MC and STAT WE, a number of candidates may have met the requirement via STAT WE (for ECU, Curtin University and Murdoch University) if their English mark was 140 or more.*

A January STAT comparison with the past years' figures is shown below:

Year	Total number of candidates	STAT Multiple Choice (MC)	STAT Written English (WE)	Score of $\geq 140$ in WE	% Achieving $\geq 140$ in WE	Score of $\geq 140$ in STAT MC (Verbal) + in STAT WE	% Achieving $\geq 140$ in STAT MC (Verbal) + in STAT WE
2012	435	142	435	357	82.1%	93	65.5%
2013	368	118	368	316	85.9%	93	78.8%
2014	299	102	299	239	79.9%	64	62.7%

## STAT NATIONAL DATABASE

The STAT National Database was established in November 1996. It was developed and is administered by TISC. It contains results for all candidates who have sat STAT in Australia from 1996 onwards.

The interstate Tertiary Admissions Centres send results files electronically after each STAT sitting in their state.

## CHANGES THAT OCCURRED IN 2014:

1. Security was used at Canning College for the 29 November and 3 January testing sessions only, due to the number of candidates sitting.
2. An additional session was again held on 31 January 2015 at the request of the universities. 79 candidates attended this session compared with 68 who sat the 1 February 2014 test.
3. Work continues on developing an online STAT booking process, but it is not expected to be available until the 2016 STAT year.

## WESTERN AUSTRALIAN UNIVERSITIES' FOUNDATION PROGRAM

The Western Australian Universities' Foundation Program (WAUFP) is a course of academic study for entry to the four public universities in Western Australia. The program is designed for international students who do not have a strong English language background and whose matriculation level is not sufficient for entry into Western Australian universities. The program commenced in 1993 and runs from February or April to November.

Fast Track WAUFP is designed for above average international students who have met academic background requirements of university entrance. It aims to give the students an opportunity to experience teaching and learning in the English language medium and to provide them with the opportunity to remedy any deficiencies in their academic background. The program commenced in 1999 and ran from August to mid-December at Tuart College. In 2006 the length of the Fast Track program was extended and now runs from June to December.

The WAUFP Mid-Year Entry program commenced in 2014 and runs from August to June.

### PROVIDER COLLEGES AND STUDENT NUMBERS

#### Provider Colleges in 2014 were:

- Canning College (WAUFP and Mid-Year WAUFP)
- Murdoch College (WAUFP)
- Tuart College (Fast Track WAUFP)

#### Student enrolments by college

##### a) WAUFP

The final number of students enrolled in 2014 was 145 as compared to 191 in 2013, a decrease of 24%. The decrease in student numbers since 2010 is 58%.

Due to a change in State government policy, Tuart College was unable to enrol under 18 year old students in the program from 2013 onwards. It therefore only offered the WAUFP Fast Track.

Final College enrolments were as follows for 2014 (2013):

Canning College	108 (137) students
Murdoch College	37 (54) students
Tuart College	0 (0) students
Total	145 (191) students

##### b) Fast Track WAUFP

Nine students enrolled in 2014 as compared to 16 in 2013 and 13 in 2012.

##### c) Mid-Year WAUFP

Twenty students enrolled in the 2014/2015 program, including two local students. Seventeen sat the final examinations, including one local student.

### STUDENT SUBJECT ENROLMENTS

Fourteen subjects were offered in WAUFP and eight subjects were offered in Fast Track and Mid-Year Entry. The numbers of students who sat each subject examination are shown in the table on the following page.

<b>SUBJECTS</b>	<b>WAUFP</b>	<b>FAST TRACK</b>	<b>MID-YEAR</b>
Accounting & Finance 3AB	37 (61)	7 (10)	8 (8)
Applied Information Technology 3AB	0 (3)		
Business Management and Enterprise 3AB	39 (57)		
Chemistry 3AB	63 (103)	2 (6)	10 (13)
Computer Science 3AB	28 (22)		15 (9)
ELACS	145 (199)	9 (16)	16 (19)
Earth and Environmental Science 3AB	7 (6)		
Economics 3AB	35 (24)	7 (10)	
English 3AB			1 (1)
Human Biological Science 3AB	45 (52)		
Mathematics 2CD	19 (17)	6 (4)	
Mathematics 3AB	58 (90)		10 (11)
Mathematics 3CD	61 (89)	3 (7)	7 (9)
Mathematics Specialist 3CD	24 (34)	2 (6)	
Modern History	0 (3)		
Physics 3AB	48 (70)	2 (6)	4 (11)
Psychology 3AB	32 (25)		

## **NATIONALITY GROUP**

### **a) WAUFP**

Over the past 9 years approximately three quarters of all WAUFP students have come from Malaysia, China, Hong Kong and Singapore. The table below shows the changes over these years.

<b>Country</b>	<b>Percentage of students from different countries</b>								
	2006	2007	2008	2009	2010	2011	2012	2013	2014
Malaysia	24%	35%	35%	36%	30%	33%	34%	38%	47%
China	28%	20%	27%	30%	31%	29%	29%	33%	17%
Hong Kong	12%	10%	10%	6%	8%	20%	10%	2%	4%
Singapore	13%	11%	6%	5%	8%	9%	11%	10%	12%
Vietnam	1%	2%	3%	5%	5%	3%	4%	4%	5%
Total	77%	77%	78%	77%	77%	81%	84%	83%	85%

In 2013 the number of students from Vietnam (8), at 4% of the total, exceeded those from Hong Kong for the first time.

### **b) Fast Track WAUFP**

All nine students came from Indonesia.

### **c) Mid-Year WAUFP**

Students came from Australia (2), China (5), Hong Kong (2), Indonesia (2), Malaysia (3), Peru (1), South Africa (1), Zambia (3) and Zimbabwe (1).



## **SETTERS, CHECKERS AND MARKERS**

### **a) WAUFP**

Fourteen subject examination papers were written in 2014 compared to 16 in 2013. All subjects, except ELACS, adopted the School Curriculum and Standards Authority Courses of Study syllabi. All subject examinations were at stage 3 except for Mathematics 2CD. There was only 1 new setter, who set the Human Biological Science 3AB paper and had been the Checker in previous years.

To ensure impartiality, TISC continued its policy of appointing examination setters from outside the Provider Colleges. Only 2 setters came from within the Colleges.

Most subject checkers came from within the Provider Colleges and this proved to be very important in ensuring the use of appropriate language for international students and maintain the overall quality of the examination papers. Only 4 Checkers were not from one of the Provider Colleges.

All papers were marked independently by 2 markers. The marking processes ran smoothly for most subjects. An error was found in the ELACS paper after marking had been completed and the 3 marks from the erroneous question were removed from the calculation.

### **b) Fast Track WAUFP**

Tuart College staff set and marked the eight final examination papers and external checkers were appointed by TISC. The process of setting the examinations was somewhat hindered by the timing of the preparation for the standard WAUFP examinations, and consequently it was proposed that the process was refined for the following year. The finalised examination papers were of a good standard. The marking and supervision of the examinations went smoothly.

### **c) Mid-Year WAUFP**

Eight subject examination papers were written in 2014/2015. All subjects, except ELACS, adopted the School Curriculum and Standards Authority Courses of Study syllabi. All subject examinations were at stage 3. All Setters had set WAUFP papers previously.

Most subject checkers came from within the Provider Colleges (including retired teachers), and this proved to be very important in ensuring the use of appropriate language for international students and maintain the overall quality of the examination papers.

All papers were marked independently by 2 markers. The marking processes ran smoothly for all subjects.

## **SPECIAL TERTIARY ADMISSIONS TEST (STAT)**

The STAT Multiple Choice Section was held during the examination weeks. All tests ran smoothly and the results were used to scale students' final subject examinations.

Each student was sent a STAT Result Letter which was posted to them with their WAUFP Notification of Results.

## **FINAL EXAMINATIONS**

### **a) WAUFP**

An examination timetable was prepared by TISC and distributed to the colleges at the beginning of August. The final examinations were held over 2 weeks and coincided with the WACE examinations.

TISC organised the supervision of the examinations. The Chief Supervisors appointed to each college attended a training meeting at TISC the week before the commencement of the examinations. At this meeting all examination procedures were reviewed. All supervisors were sent a Supervisor's Manual outlining how to run the examinations and all signed a Supervisor's Agreement that outlined their duties.

TISC ensured that all supervisors held a current Working with Children Check card.

The examinations ran smoothly and all supervisors performed well. There were no complaints concerning the supervisors and there were no reports of students' cheating.

#### **b) Fast Track WAUFP**

An examination timetable was prepared by TISC in mid-November. Tuart College printed the examination papers and all examinations were held at the college. TISC organised the supervision of the examinations and all examinations ran smoothly.

#### **c) Mid-Year WAUFP**

An examination timetable was prepared by TISC in April. All examinations were held at Canning College. TISC organised the supervision of the examinations and all examinations ran smoothly.

### **EVALUATION OF THE EXAMINATION PAPERS**

An evaluation sheet was sent to all colleges to gain feedback from teachers but very few teachers responded. Those who did respond had specific feedback that was forwarded on to the Setters concerned.

### **SUBJECT MODERATION**

#### **a) WAUFP**

Moderation of each college's assessments was carried out by standardising them to the same mean and standard deviation as the exam results of each college.

### **SCALING**

#### **a) WAUFP**

The Scaling Meeting was held on 4 December. Members of the Scaling Committee were emailed the agenda and a summary of the WAUFP Scaling Process before the meeting.

#### **b) Fast Track WAUFP**

The WAUFP Moderation/Scaling Committee delegated the scaling of Fast Track to the Executive Officer of TISC. On 8 December the Fast Track students' results were scaled by TISC. Given the very small numbers the scaling was a manual process.

Tuart College supplied internal assessment marks for all students. This additional information helped in the scaling process. At the request of Tuart College, for the first time the students' final marks were derived using 25% School Assessment and 75% Raw Examination Marks. The students' STAT result and comments on their ability from their teachers were also used in the process.

#### **c) Mid-Year WAUFP**

On 17 June students' results were scaled by TISC. Given the very small numbers the scaling was a manual process.

Canning College supplied internal assessment marks electronically for all students. This information helped in the scaling process. The students' STAT result and comments on their ability from their teachers and markers were also used in the process.

## NOTIFICATION OF RESULTS

On 7 December all WAUFP and Fast Track results were made available on the TISC website and Results Letters were despatched. TISC sent a full set of results to the International Centre of each university and the Provider Colleges were sent their students' results.

On 19 June Mid-Year results were made available online and results were despatched to students. TISC sent a full set of results to the International Centre of each university and the Provider Colleges were sent their students' results.

## RELATIONSHIP BETWEEN ELACS RESULTS AND THE CPS

### a) WAUFP

	Number of students		
	with a CPS < 50	with a CPS ≥50	Total
Number of students with an ELACS score < 50	15	9	24
Number of students with an ELACS score ≥50	16	104 <b>(72%)</b>	120
Total	31	113	144

### b) WAUFP - Changes over the last 10 years

The variations in the percentage of students with a CPS and ELACS score ≥50 (minimum requirement for university admission) reflects the differences in the abilities of the student cohort from year to year.

Year	% of students with a CPS and ELACS score ≥ 50
2005	71
2006	73
2007	70
2008	69
2009	62
2010	68
2011	67
2012	72
2013	70
2014	72

### c) Fast Track

	Number of students		
	with a CPS < 50	with a CPS ≥50	Total
Number of students with an ELACS score < 50	1	0	1
Number of students with an ELACS score ≥50	3	5 <b>(56%)</b>	8
Total	4	5	9

#### d) Mid-Year WAUFP

	Number of students		
	with a CPS < 50	with a CPS ≥50	Total
Number of students with an ELACS score < 50	1	2	3
Number of students with an ELACS score ≥50	3	11 (65%)	14
Total	4	13	17

### CERTIFICATES OF ACHIEVEMENT AND LETTERS OF CONGRATULATIONS

Certificates of Achievement were awarded to 72% of WAUFP students, 56% of Fast Track students and 65% of Mid-Year students.

Students received a certificate if they:

- Scored 50 or higher in the subject ELACS and therefore achieved English language competency, and
- Obtained a Combined Percentage Score (CPS) of at least 50.

Letters of congratulations were sent to students who had a CPS in the top 5%, and the top student in each subject with an enrolment of 10 or more students.

### FUTURE CHANGES

- a) The calculation of the CPS had been changed to use the average of either the candidate's best 3 scaled scores and their ELACS score or their best three scaled scores (excluding ELACS), whichever was higher. This would apply to the 2015 WAUFP and Fast Track cohorts, and the 2015-16 Mid-Year cohort and beyond.
- b) TISC would draft specifications regarding the electronic transfer of data for WAUFP results.
- c) Murdoch College will operate as St George's Anglican Grammar School from 2015 onwards, under the Murdoch College ABN.
- d) Local students would no longer be permitted to enrol in the Mid-Year program offered by Canning College.

## THE UNIVERSITY OF WESTERN AUSTRALIA RESIDENTIAL COLLEGES

TISC once again acted on behalf of The University of Western Australia to provide services to the five residential colleges:

CURRIE HALL  
ST CATHERINE'S COLLEGE  
ST GEORGE'S COLLEGE  
ST THOMAS MORE COLLEGE  
TRINITY (formerly ST COLUMBA-KINGSWOOD COLLEGE)

TISC received lists of applicants from the Colleges. Applicant details including course preferences and any subsequent changes of preference, college preferences, results, offer and enrolment data were recorded on the TISC database. Results and offer information were sent for each applicant to the college of first preference early in January and immediately after each round of offers.

A total of 302 applications were received, with the distribution of first preferences as shown below, previous year's figures are in brackets:

College	Number
Currie Hall	36 (37)
St Catherine's College	101 (20)
St George's College	69 (78)
St Thomas More College	10 (19)
Trinity	86 (119)
Total	302 (274)

## SCHOOL VISITS

TISC staff were invited to visit 60 metropolitan and country schools to present information to major interest groups:

- Year 12 staff
- Year 12 students (and parents)
- School staff development days

The information presented centred on the Australian Tertiary Admission Rank (ATAR), requirements for university entry, preference and offer systems as well as the services provided on the web. Additional presentations were made to schools on the Marks Adjustment Process and the impact on Stage 2 and Stage 3 courses.

Presentations varied from 20-45 minutes.

### 2014

<b>Metropolitan Schools</b>	
July	Wanneroo Secondary College, John Septimus Roe Anglican Community School, Swan Valley Anglican Community School, John Wollaston Anglican Community School, Kennedy Baptist College, Seton Catholic College, St Stephen's School, Atwell College
August	Gilmore College, John XXIII, St Brigid's College, Irene McCormack Catholic College, Servite College, Mazenod College, Christian Brothers College Fremantle, Shenton College, Frederick Irwin Anglican School, Leeming SHS, St Mary's Anglican Girls' School, Mindarie Senior College, Mt Lawley SHS, Living Waters Lutheran College, Lockridge SHS, Canning Vale College, Churchlands SHS, Comet Bay College, Rossmoyne SHS, Santa Maria College
September	Helena College, Presbyterian Ladies' College, St Hilda's Anglican School for Girls, John Curtin College of the Arts, Mercedes College, Thornlie SHS

<b>Country Schools</b>	
August	Manea Senior College, Newton Moore SHS, Australind SHS, Bunbury Catholic College, Bunbury Cathedral Grammar School, Dalyellup College, Bunbury SHS, Great Southern Grammar, Australian Christian College, Great Southern Grammar, North Albany SHS, Mt Barker Community College, St Joseph's College, Denmark High School, Georgian Molloy Catholic School, MacKillop Catholic College, Cornerstone Catholic College, Eastern Goldfields College, John Paul College, Goldfields Baptist College

### 2015

<b>Metropolitan Schools</b>	
March	Shenton College, Rossmoyne SHS
April	Aranmore Catholic College, Wesley College, Penrhos College
June	Irene McCormack Catholic College, Ocean Reef SHS, Wanneroo Secondary College, Swan Valley Anglican Community School, John Forrest Secondary College

## SCHEDULE OF DATES

### **Major Dates for Undergraduate Admissions**

<b>Date</b>	<b>Principal event</b>
<i>August 2014</i>	2015 TISC Guide despatched to all secondary schools with Year 12 students.
<i>11 August 2014</i>	Applications for undergraduate admission open.
<i>28 September 2014</i>	Closing date for receipt of undergraduate admission application forms and applications via the web without incurring a late fee.
<i>28 September 2014</i>	A late application fee of \$130 applied.
<i>29 December 2014</i>	Western Australian 2014 Year 12 students' results available on the TISC website.
<i>29 December 2014</i>	Universities Admission Advice Letter posted to WA Year 12 students who had requested and paid for copies.
<i>2 January 2015</i>	Closing date for change of preference for main round of offers.
<i>16 January 2015</i>	University offers available on the TISC website. Despatch of main round of offers to undergraduate courses.
<i>21 January 2015</i>	Closing date for late applications.
<i>21 January 2015</i>	Closing date for change of preferences for inclusion in second round of offers.
<i>3 February 2015</i>	Second round offers available on the TISC website. Despatch of second round offers. TISC notified all unsuccessful applicants at this time.
<i>May 2015</i>	2016 Course Prospectuses from each of the participating universities despatched to all secondary schools for distribution to Year 12 students.

## TISC PUBLICATIONS

The following TISC publications were distributed/published between July 2014 and June 2015:

- 2015 TISC Guide
- 2014 and 2015 STAT Booking Form
- Western Australian Universities' Foundation Program 2015 Administrative Procedures Manual

### **Pamphlets/Flyers/Posters**

- Guide to the Universities Admission Advice Letter
- Release of Scaled Scores and ATARs (Information sheet)

### **Online Publications**

- Admission Requirements for School Leavers 2018
- Admission Requirements for Mature Age Students 2016
- International Baccalaureate brochure 2016
- Statistics (2014/2015)
  - Application and Offer Statistics – 2014/2015
- Cut-Off Ranks 2015
- Indicative ATARs 2015
- ATAR Statistics (2014)
  - ATAR Frequency Distribution Table
  - ATAR Gender Breakdown
  - Histogram of School Leavers achieving particular ATARs using Stage 2 and Stage 3
  - Use of Stage 2 and Stage 3 in ATAR
  - WACE Courses used in ATAR
- Scaling Statistics (2014)
  - Histograms and Scaled Scores Statistics for WACE courses
  - Means and Populations (Preliminary and Final Scaling and Total)
  - Scaling Information Sheet 2014
  - Summary Scaling Statistics – Percentages Greater than Specified Score
  - Summary Scaling Statistics – Scaled Scores for Specified Percentiles
- TISC School Circulars 2014 – 2015
- TISC Powerpoint Presentation for WA Year 12 students
- Annual Report 2013/2014



## SCHEDULE OF FEES AND CHARGES (GST included)

<b>Service</b>	<b>Fee</b>
Application processing fee for WA Year 12 school leaver applicants up to September closing date	\$25.00
Application processing fee for non-school leaver applicants up to September closing date	\$54.00
Application processing fee (after September closing date)—all applicants	\$130.00
Despatch of applications material (TISC Guide and university prospectuses) to:	
Local applicants	\$32.00
Interstate applicants	\$47.00
Overseas applicants	\$58.00
Duplicate Documents (UAAL, STAT or WAUFP results)	\$37.00
Initial hard copy of current UAAL	\$13.00
additional copies (in the same transaction)	\$ 6.00
Certification of documents for interstate Admissions Centres	\$5 (plus \$1 per page)
Checking ATAR calculation	\$35.00
Annual Report	\$32.00
STAT:	
One test only on one day (includes sample question booklet)	\$130.00
Both tests on one day (includes sample question booklet)	\$170.00
Special supervision fee (not applicable to special needs candidates)	\$60.00
Change of session fee	\$48.00
Cancellation fee (prior to one full working day before test)	\$48.00
Sample Question Booklet 2 (red cover)	\$32.00
Despatch on behalf of ACER	\$15.00
FOI request	\$30 application fee + \$30 per hour to retrieve information requested
WAUFP Student Registration Fees (2015): <i>January and April entry</i>	Individual Colleges \$28,000 per annum or \$1,150 per student, whichever is greater
<i>August Entry</i>	Individual Colleges \$40,000 per annum or \$1,025 per student, whichever is greater
<i>Registration Fee (Fast-Track)</i>	Individual Colleges \$10,500 per annum or \$700 per student whichever is greater
<i>Additional Subject (written only)</i>	\$4,000
<i>Additional Subject (with a practical)</i>	\$5,000
<i>Private Candidate fee</i>	\$70
WAUFP: Refunds for student registration withdrawal:	
February entry before 20 April & April entry before 2 June	\$850.00
August entry before 21 September	\$800.00
Fast-Track before 20 July	\$450.00

	<b>Page</b>
<b>APPENDIX A CUSTOMER SERVICE STATISTICS</b>	<b>44</b>
Table 1 – Customer Service Statistics for Counter Enquiries	46
Table 2 – Customer Service Statistics for Phone Enquiries	47
Table 3 – Customer Service Statistics for Email Enquiries	48
<b>APPENDIX B WESTERN AUSTRALIAN UNIVERSITIES' FOUNDATION PROGRAM STATISTICS</b>	<b>49</b>
Table 1 – 2014 WAUFP Subject Statistics	50
Table 2 – 2014 WAUFP Moderation Statistics	51

**Note:** Detailed statistics on applications, offer and enrolments by course within a university for Undergraduate courses are on [www.tisc.edu.au](http://www.tisc.edu.au)

	<b>Page</b>
Table 1 Customer Service Statistics for Counter Enquiries	46
Table 2 Customer Service Statistics for Phone Enquiries	47
Table 3 Customer Service Statistics for Email Enquiries	48

Table 1: Customer Service Statistics for Counter Enquiries

Months	STAT	Uni Application Payments	Uni Application Enquiries (WA)	Admissions Requirements	Duplicate Documents	Certification of Documents	Uni Application Documents	COP	UAAL	Offers	WAUFP	Deliveries	Visitors	Terminal Use	Miscellaneous	Total Customers **
<b>Jul 14</b>	13	0	1	3	38	2	0	0	0	0	0	50	22	0	0	129
<b>Aug. 14</b>	33	14	9	2	12	2	81	0	1	0	0	58	9	6	5	223
<b>Sept. 14</b>	35	62	12	2	18	0	212	0	0	0	1	76	8	25	1	414
<b>Oct. 14</b>	57	17	13	2	18	2	233	0	0	0	0	73	15	18	2	413
<b>Nov. 14</b>	109	27	13	2	16	0	216	0	0	0	0	76	23	28	0	461
<b>Dec. 14</b>	237	17	17	5	11	1	249	0	2	0	0	61	12	18	0	574
<b>Jan. 15</b>	101	19	18	5	21	0	179	2	1	2	0	73	10	22	2	428
<b>Feb. 15</b>	7	0	4	3	36	2	3	0	0	0	0	52	18	0	0	122
<b>Total</b>	<b>592</b>	<b>156</b>	<b>87</b>	<b>24</b>	<b>170</b>	<b>9</b>	<b>1,173</b>	<b>2</b>	<b>4</b>	<b>2</b>	<b>1</b>	<b>519</b>	<b>117</b>	<b>117</b>	<b>10</b>	<b>2,764</b>
Total 2013	814	233	95	8	297	12	1,271	6	3	7	0	501	99	42	4	3,084

\*\* Includes customers with multiple requests for information.

Table 2: Customer Service Statistics for Phone Enquiries

Months	STAT	Change of Password	Uni Application Payments	Uni Application Enquiries (WA)	Admissions Requirements	TISC Guide Enquiry	Duplicate Documents	Wrong Number	Past Results By Phone	Change of Address	Change of Preferences	UAAL	Deferral Enquiries	Offers	WAUFP	Extensions	TAFE	Registration/Login	SCSA (Curriculum Council)	General Information incl HECS	Total Calls **
<b>Jul 14</b>	121	0	0	63	40	0	65	11	31	0	1	5	0	0	3	36	3	2	6	36	423
<b>Aug. 14</b>	195	11	8	481	87	10	31	22	29	2	8	6	1	6	2	51	2	46	18	39	1,055
<b>Sept. 14</b>	216	81	42	692	117	4	55	21	31	2	16	10	8	8	1	23	1	89	16	50	1,483
<b>Oct. 14</b>	254	10	66	479	43	0	50	14	24	1	8	3	8	14	2	31	1	25	5	41	1,079
<b>Nov. 14</b>	342	7	23	462	58	0	42	16	20	1	16	5	7	25	0	38	5	60	5	38	1,170
<b>Dec. 14</b>	444	69	7	652	58	0	31	21	26	5	20	26	3	45	7	26	5	42	13	33	1,533
<b>Jan. 15</b>	310	34	13	843	51	0	51	19	21	1	30	8	3	175	0	30	3	18	13	9	1,632
<b>Feb. 15</b>	66	4	0	54	36	2	71	14	37	0	0	8	1	42	0	26	2	5	4	26	398
<b>Total</b>	<b>1,948</b>	<b>216</b>	<b>159</b>	<b>3,726</b>	<b>490</b>	<b>16</b>	<b>396</b>	<b>138</b>	<b>219</b>	<b>12</b>	<b>99</b>	<b>71</b>	<b>31</b>	<b>315</b>	<b>15</b>	<b>261</b>	<b>22</b>	<b>287</b>	<b>80</b>	<b>272</b>	<b>8,773</b>
Total 2013	2,984	240	251	5,548	391	29	589	184	0	13	155	115	23	455	5	361	19	184	75	156	11,778

\*\* Calls for particular extensions are not listed

Table 3: Customer Service Statistics for Email Enquiries

Months	ATAR	Browser Issues	COP – Course Info	Current Undergraduate Applications	Deferment	Duplicate Documents	General Information	Offers	Password Reset/User ID	Scaling	School/Organisation Query	STAT	WAUFP	Total Emails
<b>Jul 14</b>	3	0	0	0	1	17	39	0	28	6	12	10	0	116
<b>Aug. 14</b>	15	19	21	116	8	32	79	4	188	2	59	51	0	594
<b>Sept. 14</b>	16	22	39	187	7	29	78	8	584	3	16	30	0	1,019
<b>Oct. 14</b>	4	11	34	112	3	29	56	13	99	0	12	52	2	427
<b>Nov. 14</b>	1	11	9	70	0	23	49	9	107	0	10	31	4	324
<b>Dec. 14</b>	45	1	20	80	1	27	30	18	579	23	5	50	21	900
<b>Jan. 15</b>	23	2	57	87	0	38	38	133	184	3	12	44	2	623
<b>Feb. 15</b>	8	0	0	7	0	35	15	24	41	1	17	12	0	160
<b>Total</b>	<b>115</b>	<b>66</b>	<b>180</b>	<b>659</b>	<b>20</b>	<b>230</b>	<b>384</b>	<b>209</b>	<b>1,810</b>	<b>38</b>	<b>143</b>	<b>280</b>	<b>29</b>	<b>4,163</b>
Total	169	46	171	772	22	239	443	256	1,730	23	104	266	47	4,295

		<b>Page</b>
Table 1	Western Australian University Foundation Program Subject Statistics 2014	50
Table 2	Western Australian University Foundation Program Moderation Statistics 2014	51

2014 WAUFP Subjects Statistics							
Subject	Scaling population	Scores	max	min	mean	stddev	% > 50
<b>Accounting and Finance</b>	35	combined	89.45	9.36	44.67	19.11	37.14
		scaled	86.81	11.70	51.37	16.92	60.00
<b>Business Management and Enterprise</b>	39	combined	85.16	24.65	52.00	16.07	56.41
		scaled	78.79	26.14	52.63	13.47	61.54
<b>Chemistry</b>	63	combined	90.14	17.77	57.67	18.60	66.67
		scaled	93.42	34.55	69.88	15.05	88.89
<b>Computer Science</b>	28	combined	91.61	8.38	59.81	19.45	71.43
		scaled	89.51	8.38	57.23	17.79	67.86
<b>Earth and Environmental Science</b>	7	combined	55.23	28.84	43.73	9.97	42.86
		scaled	70.15	35.84	53.11	12.58	71.43
<b>Economics</b>	34	combined	77.95	9.63	48.63	19.34	55.88
		scaled	79.95	12.04	53.18	18.89	67.65
<b>ELACS</b>	144	combined	79.14	17.98	53.27	11.94	59.72
		scaled	84.36	22.48	61.95	12.04	83.33
<b>Human Biological Science</b>	44	combined	87.19	8.25	52.85	19.50	54.55
		scaled	91.27	13.75	65.26	17.18	81.82
<b>Mathematics</b>	137	combined	117.28	9.48	75.55	22.46	86.13
		scaled	97.28	7.21	60.68	18.24	75.91
<b>Mathematics 2CD</b>	19	scaled	59.77	7.21	37.15	13.36	15.79
<b>Mathematics 3AB</b>	57	scaled	82.79	12.23	56.15	15.45	73.68
<b>Mathematics 3CD</b>	61	scaled	97.28	42.42	72.24	11.98	96.72
<b>Mathematics: Specialist</b>	24	combined	92.00	24.34	59.90	19.07	75.00
		scaled	93.51	35.31	66.75	16.51	83.33
<b>Physics</b>	47	combined	79.69	5.13	50.73	18.43	51.06
		scaled	90.90	8.97	64.70	18.25	80.85
<b>Psychology</b>	32	combined	78.44	0.50	48.72	16.26	43.75
		scaled	87.06	0.50	59.79	20.45	75.00

Subjects are stage 3 unless otherwise indicated.



**2014 WAUFP Moderation Statistics**

<b>Subject</b>	<b>Scaling population</b>		<b>Assesment</b>	<b>Exam</b>	<b>Moderated Assessment</b>
<b>Accounting and Finance 3AB</b>	35	mean	53.17	44.67	44.67
		stdev	14.19	19.71	19.71
<b>Business Management and Enterprise 3AB</b>	39	mean	53.56	52.00	52.00
		stdev	18.91	16.72	16.72
<b>Chemistry 3AB</b>	63	mean	65.87	57.67	57.67
		stdev	13.04	18.97	18.97
<b>Computer Science 3AB</b>	28	mean	63.29	59.81	59.81
		stdev	15.50	19.71	19.71
<b>Earth and Environmental Science 3AB</b>	7	mean	52.14	43.73	43.73
		stdev	6.31	10.71	10.71
<b>Economics 3AB</b>	34	mean	55.85	48.63	48.63
		stdev	15.24	19.64	19.64
<b>ELACS</b>	144	mean	57.95	53.27	53.27
		stdev	12.10	12.40	12.40
<b>Human Biological Science 3AB</b>	44	mean	63.55	52.77	52.93
		stdev	16.86	20.05	19.58
<b>Mathematics 2CD</b>	19	mean	61.05	56.53	56.53
		stdev	18.64	19.19	19.19
<b>Mathematics 3AB</b>	57	mean	59.44	61.03	61.03
		stdev	18.32	19.60	19.60
<b>Mathematics 3CD</b>	61	mean	61.89	65.72	65.72
		stdev	16.04	17.81	17.81
<b>Mathematics: Specialist 3CD</b>	24	mean	59.83	59.90	59.90
		stdev	16.77	19.25	19.25
<b>Physics 3AB</b>	47	mean	52.96	50.69	50.76
		stdev	14.67	18.90	18.71
<b>Psychology 3AB</b>	32	mean	59.38	48.61	48.83
		stdev	14.00	17.19	16.50